
Technical Specifications

California Theatre



345 S. First Street
San Jose, California 95113

TABLE OF CONTENTS

Overview	3
Fast Facts	3
Stage Dimensions	4
Size of Space in Front of Curtain	4
Front of House Dimensions	4
Load In	5
Stagehands	5
Stage Rigging	6-8
Curtains, Softgoods, Masking and Miscellaneous	8
Lighting	8-9
Power	9
Sound	10-11
Additional Spaces	11-14
Dressing Rooms	11-13
Wardrobe	13
Laundry Facilities	14
Makeup	14
Amenities	14
House Seating Capacities	14
Pianos	14
Odds and Ends	14
Seating Plan	15
Mezzanine Level Floor Plan	16
Orchestra Level Floor Plan	16
Balcony Level Floor Plan	17
Lower Level Dressing Rooms	18
Other Addresses and Phone Numbers	19-20



Overview

The California Theatre is one of the best examples of the Art Deco style motion picture houses from the late 1920s and adds glamour and class to any meeting, film screening, concert or private party.

The theater boasts comfortable seating and great acoustics inside the main theater and features three additional meeting rooms with state-of-the-art audio and visual technology as well as a courtyard that can be utilized for a variety of events. The theater, with its grand foyer, provides an elegant option for presentations, post meeting shows or cocktail receptions.

Located across the street from the San Jose Convention Center, the theater is within easy walking distance of several parking lots and numerous restaurants within the creative hub of Downtown known as the South First Area (SoFA) District.

Fast Facts

- Across the street from the Convention Center
- 1,122 seating capacity, including up to 14 wheelchair seats
- State-of-the-art audio visual technology
- Home of Opera San Jose and Symphony Silicon Valley
- Built in 1927 as the Fox Theatre, a Hollywood motion picture house
- \$80 million in renovations; completed and reopened in 2004
- Ranks among the world's most intimate Opera houses
- Houses a 1927 Wurlitzer console organ with 1521 pipes plus symphonic percussion
- Perfect for film screenings, presentations, performances, cocktail receptions, concerts, weddings, etc.
- Located just 2 blocks from the Convention Center
- Easy access to parking, public transportation, hotels and restaurants

Stage Dimensions

· Proscenium Width	43' 10"
· Proscenium Height	31' 7" at Center (Valance 25' at Center)
· Grid Height	86' 6"
· CL to Stage Left Wall	40' 7"
· Stage Left Wall to Stage Right Wall	92'
· CL to Stage Right Wall	51' 5"
· PL to House Curtain	1' 6"
· PL to US Wall (at CL)	41'
· PL to FOH Control Room	84'
· PL to Spot Booth	113' 8"

Size of Space in Front of Curtain

· Shows 19' at Center	15' at Sides
	43' wide at Proscenium
	45' wide at Edge of Pit

Front of House Dimensions

· Courtyard	Length: 67'1" Width: 39'1" Height: 14'8"
· 1 st Level Market Street Corridor	Length: 90'11" Width: 16'4" Height: 10'5"
· Market Street Lobby (<i>Back Theatre Entrance</i>)	Length: 28'7" Width: 47'11" Height: 21'2"
· Mezzanine Foyer Balcony (<i>Overlooking Market St. Lobby</i>)	Length: 53'8" Width: 9'9" Height: 9'1"
· Mezzanine Foyer/Concessions Area	Length: 103'0" Width: 21'2" Height: 13'2"
· Main Theatre Lobby (<i>1ST Street</i>)	Length: 78'3" Width: 26'4" Height: 28'3"

Load In

Dock Entrance Located At: 344 South Market Street
San Jose, California 95113

Street Level load in, then down ramp. No truck height dock. No Truck loading ramp available.
Loading Door at Street: 12'-0" W x 14'-6" H. Loading Dock area: Off stage right 26' x 60'. Loading
Door at Stage: 13'-11" W x 17'-11" H.b. 1-ton stacker motor in Loading dock area
Note: A 24' Bobtail may be backed into the dock area.

It should also be noted that the street outside our loading door is State HWY 82. This means that additional restrictions as far as parking, lane blockage, etc apply. If you anticipate anything in special needs, you should be in touch with us WELL in advance. In some cases we can accommodate you, however State Highway restrictions are rather strict.

Stagehands

General Guideline of Rates and Conditions:

- Concerts and entertainment: Load In is a 4 hour minimum. Performance Call which commences 30 minutes prior to curtain and ends 3.5 hours after curtain or you shall be billed on the hour for OT. Load Out is a 4 hour minimum or 3 hours if one worked the show call.
- Lectures, corporate parties, commercial and industrial events, trade shows, computer generated presentations, as well as audio and/or video recording, where the product is to be sold to the attendees or the general public. 8 Hour minimums for everyone but loaders who have 5 hour minimums.
- Stagehands break for 15 minutes after 2 continuous hours worked and break for meal after 5 hours worked. Work on stage shall cease for 1 hour during non-paid one hour meal breaks. 30 minute meal breaks shall be paid and the stage hands shall have their meal provided for them by the client. Meal penalty is two times the prevailing rate. Returning from a 1 hour meal break a stagehand receives a 2 hour minimum.
- Work between the hours of Midnight and 7am shall be paid at double time.
- There shall be department heads for Sound, Electrics, Video, and Carpentry. The steward is above the call. Standard union rules apply.

Stage Rigging

Type: Single purchase counterweight. 60,000 lbs available

Line Sets	59 sets on 6" or 8" centers	
	Side ladders 2' offstage of pipe ends	
	Tab Pipes 2' offstage of ladders	
House pipes	63' schedule 80	
	In trim 4'-0" above deck	All trims measured to bottom of pipe
	Out Trim 6" 74'-6" above deck	
	Out Trim 8" 81'-4" above deck	
	Travel 6" 70'-6" above deck	
	Travel 8" 77'-4" above deck	

House sets are not kickable, however roller diverters are workable. None in stock at present.
25 Spot wheels, plus head and muling blocks available, with 5/8" Multiline II for 5 hemp sets available.
No hemp, all Dacron/ cotton blend (Multiline II)

1500 feet loose line available.

Sweeps available for full wrap cyclorama, work with tab pipes and lineset 59. This is a MAJOR PROJECT, but is doable with advance notice.

LINE	DEPTH	PIPE TO PIPE	PIECE	TRIM	NOTES
AP-2	2'-5"		SUPERTITLE SCREEN		
AP-1	1'-11"		MAIN VALANCE		
Smoke Pocket	0'-0"				
1	0'-8 1/2"				
2	1'-6"		MAIN CURTAIN		
3	2'-2"		ZETEX		
4	2'-8"		1ST ELECTRIC		
Projection Screen	3'-11"		MOVIE SCREEN		Doesn't kick- out trim is 55'-2" to BOTTOM
5	5'-0"		BORDER		
6	5'-5"		LEGS		
7	5'-11"				
8	6'-4"				
9	6'-11"				
10	7'-5"				
11	7'-11"				
12	8'-5"				
13	9'-0"				
14	9'-6"				
Purlin	10'-0"				Cannot hang at purlin
15	10'-6"		BORDER		
16	11'-3"		LEGS		
17	11'-11"				
18	12'-8"				
19	13'-3"				
20	13'-11"				
21	14'-7"				
22	15'-3"				
23	15'-11"				
24	16'-7"				
25	17'-6"		BORDER		
Purlin	18'-0"				Cannot hang at purlin
26	18'-6"		LEGS		

27	19'-4"		MID STAGE TRAVELLER		
28	20'-0"				
29	20'-8"				
30	21'-4"				
31	21'-11"				
32	22'-7"				
33	23'-3"				
34	23'-11"				
35	24'-7"		BORDER		
36	25'-5"		LEGS		
Purlin	26'-0"				Cannot hang at purlin
37	26'-6"				
38	27'-4"				
39	27'-11"				
40	28'-7"				
41	29'-4"				
42	29'-11"				
43	30'-8"				
44	31'-3"				
45	31'-11"		BORDER		
46	32'-7"		LEGS		
47	33'-6"				
Purlin	34'-0"				Cannot hang at purlin
48	34'-4"				
49	35'-0"				
50	35'-5"				
51	36'-0"				
52	36'-6"				
53	36'-11"				
54	37'-5"				
55	37'-11"				
56	38'-5"				
57	39'-0"				
58	39'-6"		UPSTAGE TRAVELLER		
59	40'-6"		WHITE LENO CYC		

Curtains, Soft Goods, Masking and Miscellaneous

10 Black Velour Legs 13'-9"w x 28'h

1 Black Velour Border 12'-0"h x 95'-0"w

5 Black Velour Borders 8'-0"h x 95'-0"w
8 Black Velour Tabs 6'-5"w x 32'-0"h
2 Full stage Travellers each 33'-6"h x 56'-0"w
1 White Leno Bounce/ Cyclorama 30'-0"h x 63'-0"w
1 Black Sharkstooth Scrim 30'-0"h x 63'-0"w

Hang varies widely and rarely stays the same for more than one event, please call ahead for current information.

Main Curtain

Traveler type or guillotine.

Lighting

Hang varies widely and rarely stays the same for more than one event, please call ahead for current information

Console:

ETC GIO 4K, 20 channel Fader wing, EOS RPU, Gateways, (4) External monitors

Moving Lights:

6 Vari*lite VL 2600

Conventional:

ETC Source 4 ellipsoidals- All 575w

5°	15	
10°	21	
15-30° Zoom	14	
19°	111	Plus 20 Barrels
26°	162	Plus 25 Barrels
36°	142	Plus 25 Barrels
50°	20	Plus 10 Barrels

36 ETC S4 Lustr 2

1k Fresnels

30 DeSisti Monet

2k Fresnels

30 DeSisti Monet

Pars

74 Source 4 575w

All include full lens kit (vn-wide)

10 Parnel 575w (usually work lights)

Striplights

9 each 6' L & E 3 circuit- 750w per circuit/unit

Cyc Fixtures

16 Colorforce II 72

12 Colorforce II 12 in (pulpits and Juliets) currently waiting on install

Followspots

Lycian 1290 XLT 2KW Xenon; 2 each Not Removable

Followspot booth doubles as projection booth, room for two Followspots, additional room outside booth for two additional spots.

Booth Power 4 each 30A Single Phase Twistlocks/ Breakers

35mm Projectors are NOT movable, for any reason. Do not expect to use those ports for any other equipment.

Power:

2 - 400amp 3 phase Up stage right

1 - 225 amp 3 phase (isolated) up stage right

1 - 250 amp 3 phase Up stage left

Projection:

1 Christie D20WU-HS Projector

1 Christie 4.0-7.2 Long throw lens

1 Christie .84- 1.02:1 Short throw lens

1 Epsom 7k lumen projector

1 Epsom 1.19-1.62 lens

1 Analog Way Saphyr switcher

1 Mac Mini with 2 Monitors

1 Stumphl 24' x 13.5' Screen, FP & RP fabrics, full dress kit

Sound:

Console: (2) Yamaha CL3, 64 mono, 8 stereo inputs
2 Rio 3224-D2 stage boxes, 32 M/L inputs, 16 analog outputs, 4 Stereo AES outputs
2 D&B DS10 Processors

Speakers:

D&B Y8 Speaker system
10 cabinets per side, flown
8 Y series subwoofers, ground stacked
4 D&B E8 loudspeakers, under balcony fills
6 D&B E6 Loudspeakers, front fills
D&B amplification
Lake LM26 processor

Mic Package:

5 Shure SM58
5 Shure SM57
6 Shure KSM 137
4 Shure MX 202B/C
4 Shure KSM 32
1 Shure Beta 52
1 Shure SM 91A
4 Shure SM 81
6 Sennheiser 904
6 Sennheiser 604
2 Radial Pro D2 stereo DI
4 Radial J48 active DI
4 Radial JDI passive DI

Wireless:

6 channels of Wireless microphone includes:
3-Shure ULXD4D dual channel digital wireless receiver
6-Shure ULXD1 digital wireless body pack transmitter
6-Shure WL184 super cardioid lavalier microphone
6-Shure ULXD2/SM58 digital wireless HH transmitter
6-Countryman E6 microphones (2-Light Beige, 2-Tan, 2-Cocoa)

Communications:

10- Clearcom Freespeak Wireless Com
Clear- Com 4 channel headset system
Telex Wireless system, 4 belt packs
Catwalk Announce
Tech and dressing area page and monitor system

Lobby announce and page system

Road Console

House mix position located off center house right or left in front of cross aisle. Also available with more seats affected is center house, remove 12 seats plus shadow behind mix. Alternate location rear of house which would entail more seats removed. Cable run to Stage is 250' from Control Room/ Rear of House, 200' from Center of House.

Tie in to house system via XLR connectors

Plenum access requires seat removal.

Tie Lines

Extensive audio and video tie lines are available. All audio are Lo z balanced, very high quality, may be used as mic or line level.

ADD PINOUT ON XLR-3

All video tie lines are RG 6 equivalent or better.

Audio/ Video patch bays in control room at rear of orchestra.

Additional Spaces

Dressing Rooms

The California is well equipped with dressing rooms. However, they are split between the basement and the second floor. As with load in, you should plan for your cast to take a little time to get on stage. This is probably a good time to emphasize that the backstage elevator is SLOW and your cast should not count on it in a rush situation. Besides, they need the exercise, right? Seriously, the elevator is rather high capacity, and that means very slow speed. Cast should plan on using the stairs if at all possible.

LOWER LEVEL DRESSING ROOMS

Make-Up Room LL-30

- Width 17' 9" – Length 29' 4"
- Seats 27 People
- 2 Make-up counter
- 2 Shampoo backwash units

Dressing Room LL-45

- Width 14' 10" – Length 34' 6"
- Seats 12 people
- Restroom provided (2 sinks, 2 showers and 2 toilets)
- 2 Make-up counter

Dressing Room LL-46

- Width 15' 2" – Length 34' 6"
- Seats 12 People
- Restroom provided (2 sinks, 2 showers and 2 toilets)
- 3 Make-up counter

Dressing Room LL-48

- Width 16' 1" – Length 34' 6"
- Seats 12 people
- Restroom provided (2 sinks, 2 showers and 2 toilets)
- 2 Make-up counter

Dressing Room LL-49

- Width 10' 10" – Length 29' 3"
- Seats 6 people
- Restroom provided (Shower, Sink and toilet)
- Make-up counter
- Costume rack provided

Dressing Room LL-50

- Width 10' 10" – Length 29' 2"
- Seats 4 people
- Restroom provided (shower, sink and toilet)
- Make-up counter
- Costume rack provided

Dressing Room LL-55

- Width 20' 0" – Length 24' 2"
- Seats 4 people
- Restroom provided (shower, sink and toilet)
- Make-up counter
- Costume rack provided

Dressing Room LL-56

- Width 12' 4" – Length 12' 1"
- Seats 4 people
- Restroom provide (shower, sink and toilet)
- Make-up counter
- Costume rack provided

Musicians Room LL-59

- Width 25' 11" – Length 30' 11"
- Seats 20 People
- Lockers Provided
- Both men's and women's restroom provided
- Kitchenette provided (microwave, sink and refrigerator)

LEVEL 2 DRESSING ROOMS

Dressing Room 227

- Width 11' 0" – Length 19' 10"
- Seats 4 people
- Restroom provided (shower, sink and toilet)
- Leather couch
- Make-up counter
- Costume rack provided

Dressing Room 228

- Width 10' 11" – Length 24' 0"
- Seats 4 people
- Restroom provided (shower, sink and toilet)
- Make-up counter
- Leather couch
- Costume rack provided

Dressing Room 229

- Width 10' 10" – Length 18' 3"
- Seats 4 people
- Restroom provided (shower, sink and toilet)
- Make-up counter
- Costume rack provided

Dressing Room 231

- Width 10' 7" – Length 18' 3"
- Seats 4 people
- Restroom provided (shower, sink and toilet)
- Costume rack provided

Wardrobe Room 232

- Width 8' 4" – Length 13' 2"
- Seats 2 or 3 people
- Table and chair provided
- Wardrobe mirror

Dressing Room 233

- Width 8' 6" – Length 24' 0"
- Seats 3 people
- Restroom Provided (shower, sink and toilet)
- Make-up counter
- Costume rack provided
- Leather couch

Wardrobe

The wardrobe room (shop) is on the ground floor, near the stage. The shop is quite spacious, and has a separate laundry room with sorting space. It contains two commercial dryers (laundromat style) and one very large commercial front loader washer (comforter/ carpet size). There is room in front of the

slop sink to add a second consumer washer, however we do not have one in stock. You can rent one locally. Water and electric hookups are present.

The theatre does not own steamers/irons/boards, laundry carts, etc.

N.B.: All dressing rooms are accessed by a SLOW elevator or stairs. Two or three rolling racks/gondolas will fit in the elevator, but you should plan your time accordingly

The backstage freight elevator is a hospital gurney type, with an interior measuring approximately 6' x 8'. Capacity 10000 lbs speed very slow.

Laundry Facilities

1 large commercial washer

2 large commercial dryers

Can accommodate 1 additional domestic washer in addition.

Counter space, however no other equipment.

Makeup

The California has a large makeup room in the basement, just down the hall from the main dressing room area. It has room for approximately 8-10 stations, as well as hair sinks, color corrected lighting, continuous mirrors and ample counter space. There are electric outlets on the countertop at each station, as well as wall outlets

Amenities

All dressing rooms are heated/air conditioned, with full counters, full mirrors, color corrected lighting, electric outlets on the counters, lockable drawers (bring your own padlock), chairs, rolling rack space (no hanging capacity- racks only), bathrooms, showers and vinyl floors. All dressing rooms are ADA compliant

House Seating Capacities

· 1,122 seating capacity including up to 14 Wheelchair seats

· 687 Orchestra seats (677 Fixed and up to 10 Wheelchair seats included)

· 196 Mezzanine seats (192 Fixed and 4 Wheelchair seats included)

· 239 Grand Tier seats

Pianos

House does not own a piano.

Odds & Ends

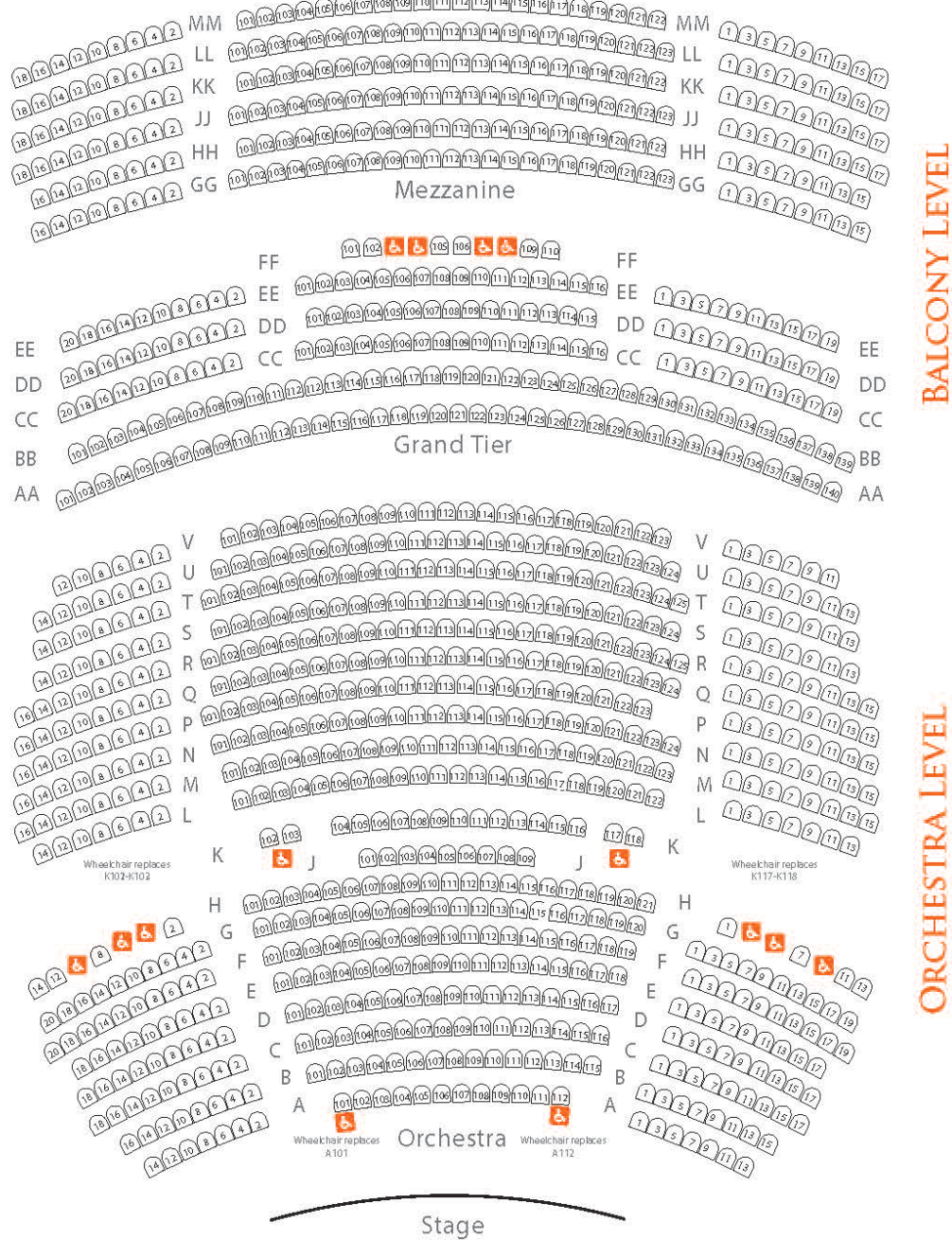
Storage and Rehearsal areas

Loading dock area is 26' x 60' concrete floor, off SR

Rehearsal Hall on 3rd floor- 37'-3" x 47'-8"

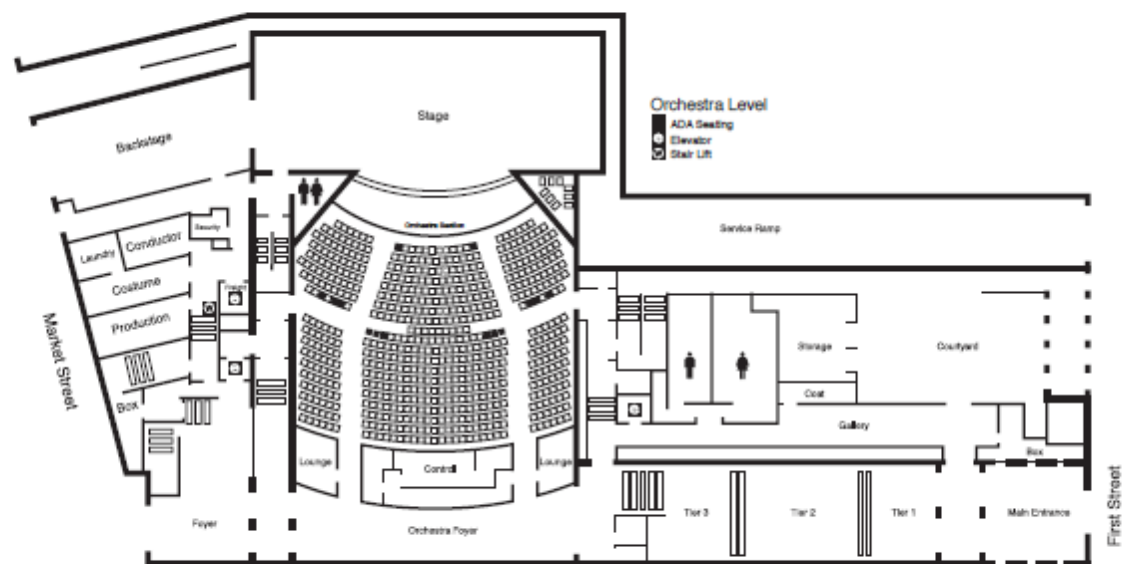
Hall is equipped with a sprung hardwood floor, lighting and sound equipment.

SEATING PLAN

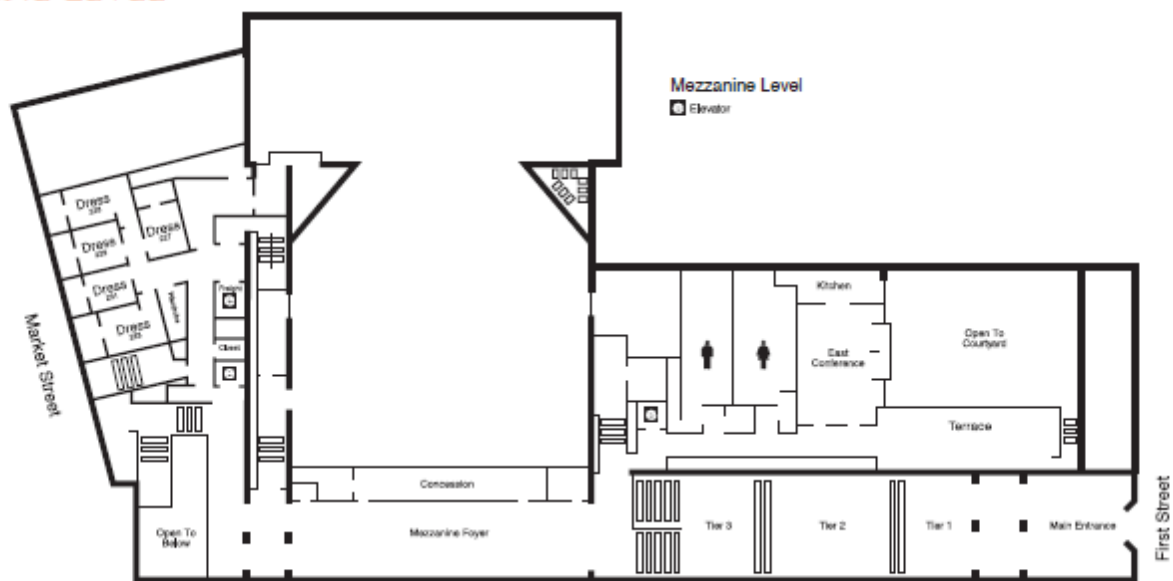


Location	Capacity	Orchestra Level Seating Capacity	Balcony Level Seating Capacity (Grand Tier & Mezzanine)	Grand Tier Level Seating Capacity	Mezzanine Level Seating Capacity	Stage Size (W x D)	Active Stage Area	Stage Proscenium Opening (W x H)
California Theatre	1,122 Total 1,108 Fixed 12-14 Wheelchair areas	687 Total, 679 Fixed 8 Wheelchair areas (Fixed seats K101-K102, K118-K119, A101& A112 can be removed to accommodate an additional wheelchair on each side)	435 Total 431 Fixed 4 Wheelchair areas	196 Total 192 Fixed 4 Wheelchair areas	239 Fixed	90' x 40'	60' x 40'	31' 6" x 44'

ORCHESTRA LEVEL

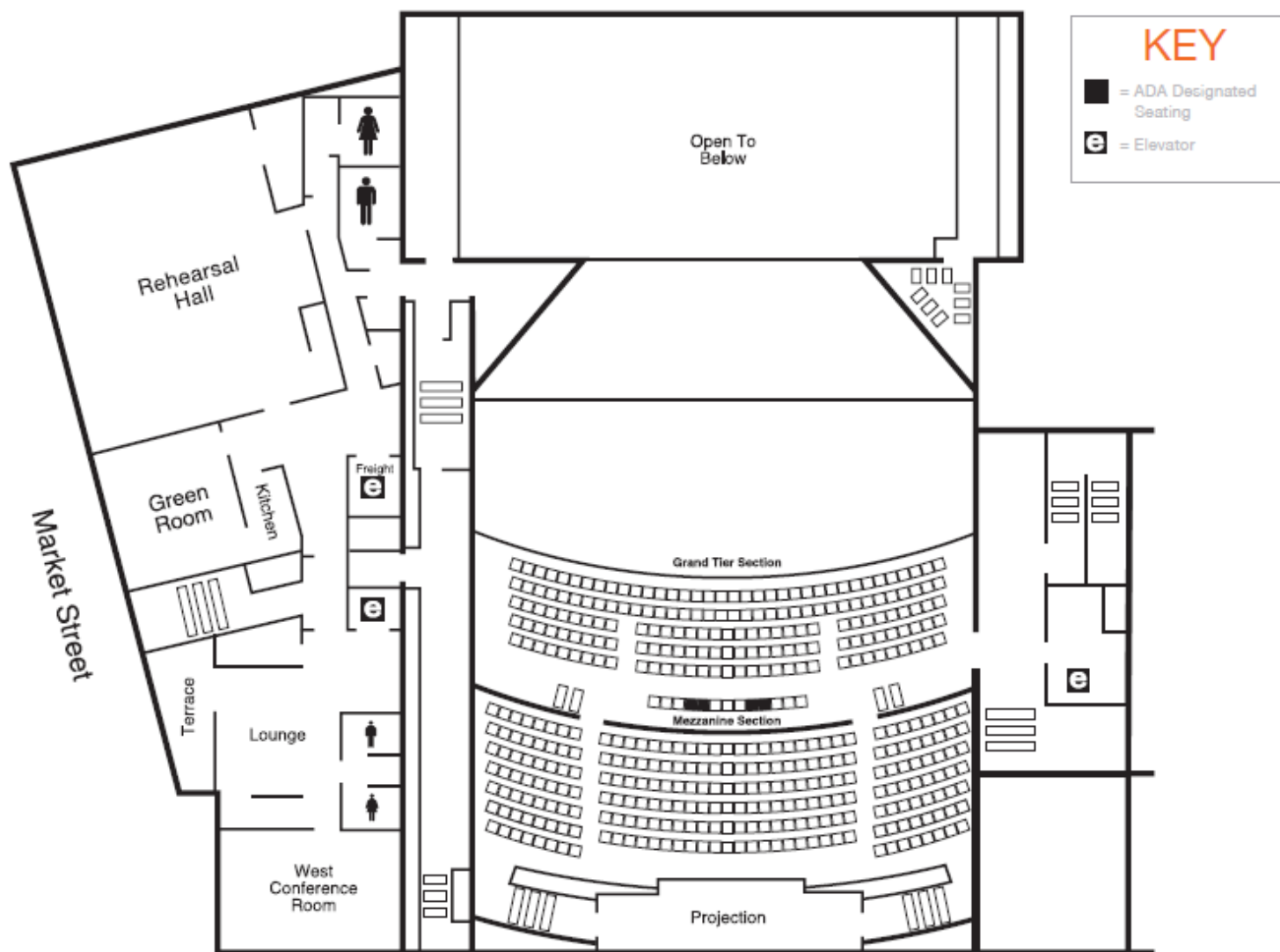


MEZZANINE LEVEL



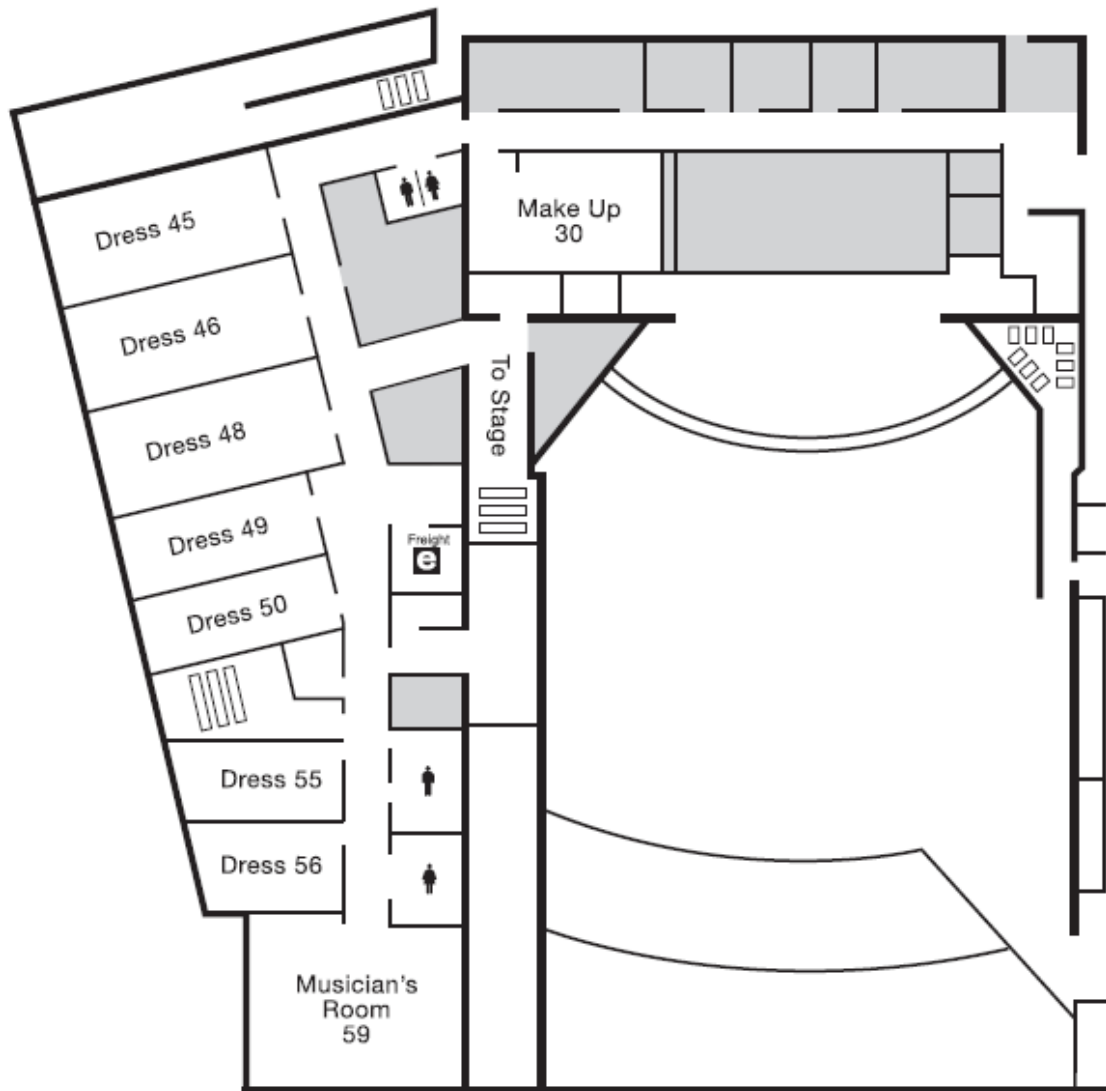
Location	Capacity	Orchestra Level Seating Capacity	Balcony Level Seating Capacity (Grand Tier & Mezzanine)	Grand Tier Level Seating Capacity	Mezzanine Level Seating Capacity	Stage Size (W x D)	Active Stage Area	Stage Proscenium Opening (W x H)
California Theatre	1,122 Total 1,108 Fixed 12-14 Wheelchair areas	687 Total, 679 Fixed 8 Wheelchair areas (Fixed seats K101- K102 & K118-K119 can be removed to accommodate an additional wheelchair on each side)	435 Total 431 Fixed 4 Wheelchair areas	196 Total 192 Fixed 4 Wheelchair areas	239 Fixed	90' x 40'	60' x 40'	31' 6" x 44'

BALCONY LEVEL



Location	Capacity	Orchestra Level Seating Capacity	Balcony Level Seating Capacity (Grand Tier & Mezzanine)	Grand Tier Level Seating Capacity	Mezzanine Level Seating Capacity	Stage Size (W x D)	Active Stage Area	Stage Proscenium Opening (W x H)
California Theatre	1,122 Total 1,108 Fixed 12-14 Wheelchair areas	687 Total, 679 Fixed 8 Wheelchair areas (Fixed seats K101-K102 & K118-K119 can be removed to accommodate an additional wheelchair on each side)	435 Total 431 Fixed 4 Wheelchair areas	196 Total 192 Fixed 4 Wheelchair areas	239 Fixed	90' x 40'	60' x 40'	31' 6" x 44'

LOWER LEVEL DRESSING ROOMS



Non-client facing operations

Location	Capacity	Orchestra Level Seating Capacity	Balcony Level Seating Capacity (Grand Tier & Mezzanine)	Grand Tier Level Seating Capacity	Mezzanine Level Seating Capacity	Stage Size (W x D)	Active Stage Area	Stage Proscenium Opening (W x H)
California Theatre	1,122 Total 1,108 Fixed 12-14 Wheelchair areas	687 Total, 679 Fixed 8 Wheelchair areas (Fixed seats K101-K102 & K118-K119 can be removed to accommodate an additional wheelchair on each side)	435 Total 431 Fixed 4 Wheelchair areas	196 Total 192 Fixed 4 Wheelchair areas	239 Fixed	90' x 40'	60' x 40'	31' 6" x 44'

Limo and Town car Service	Service Plus Transportation Mr Jun Barron	510- 408-7479 suv301@gmail.com	
Bus Services	VTA www.vta.org	(408) 321-2300	
Light Rail	The Convention Center light rail stop is a short walk from the San Jose Theaters. It is served by routes 901 (http://www.vta.org/routes/rt901) and 902 (http://www.vta.org/routes/rt902).		
Local Parking	Parking can be found at several nearby lots. Please visit https://sanjosetheaters.org/directions/ for information.		
Printing/Shipping	FedEx Office Print & Ship Center 93 E. San Carlos St. San Jose, CA 95112 (408) 295-4336	The UPS Store 88 S 3 rd St San Jose, CA 95113 408-293-9803	
Shopping	Westfield Valley Fair Mall 2855 Stevens Creek Blvd. Santa Clara Ca, 95050-6709 http://westfield.com/valleyfair/ (408) 248-4451	Santana Row 377 Santana Row San Jose, CA 95128 http://www.santanarow.com/ (408) 551-4611	
Restaurants	There are many fine restaurants within walking distance. Please visit https://www.sanjose.org/restaurants for more information.		
Restaurants Open late	Original Joe's 301 S. First St. San Jose, CA 95113 (408) 292-7030	Loft Bar & Bistro 90 S. 2 nd St. San Jose, CA 95113 (408) 291-0677	
	Gordon Biersch 33 E. San Fernando St. San Jose, CA 95113 (408) 294-6785	Affinity (Hilton) 300 Almaden Blvd. San Jose, CA 95113 (408) 287-2100	Il Fornaio (Westin San Jose) 302 S. Market St. San Jose, CA 95113 (408) 271-3366
Food Delivery	Doordash.com	Grubhub.com	
Coffee	Starbucks 125 S. Market St. San Jose, CA 95113 Closed weekends	Caffe Frascati 315 S. First St. San Jose, CA 95113 (408) 287-0400	Pect's Coffee & Tea 408 Almaden Blvd. San Jose, CA 95113 (hours vary)
Groceries	Safeway 1300 W. San Carlos St. San Jose, CA 95126	Whole Foods Market 777 The Alameda San Jose, CA 95126	

(408) 882-0999

(408) 207-1126

Laundromat

Quickwash Laundry Inc.
485 E. San Carlos St.
San Jose, CA 95112
(408) 995-0895

Keyes Laundromat & Pure Water
454 Keyes St.
San Jose, CA 95112
(408) 995-6992

Post Office

United States Postal Service
105 N. First St.
San Jose, CA 95113
(408) 292-0487

Gyms

Orange Theory
111 W St John St #110
San Jose, CA 95113
(408) 912-2886

Yoga

Downtown Yoga Shala
467 S. First St.
San Jose, CA 95113
(408) 272-2631

Banks

Chase Bank
55 W. Santa Clare St.
San Jose, CA 95113
(408) 291-3331

Bank of the West
77 N Almaden Blvd
San Jose, CA 95110
(408) 947-5005

Union Bank
99 Almaden Blvd #100
San Jose, CA 95113
(408) 279-7700

Wells Fargo
685 Coleman Ave #10
San Jose, CA 95110
408-660-3430

Bank Of America ATM
99 S 4th St
San Jose, CA 95112

Pharmacy

Walgreens Drug Store
1399 W San Carlos St
San Jose, CA 95126
(408) 971-3098

Doctors

Ear, Nose and Throat
Dr. Hussein Samji
6060 Hellyer Ave. #150
San Jose, CA 95138
(408) 227-6300

Dentist
Jonathan Yu DDS
2323 Forest Ave.
San Jose, CA 95128
(408) 247-9626

Chiropractor
Tina McGinnis, DC
5149 Moorpark Ave. #102
San Jose, CA 95129
(408) 253-9740