
Technical Specifications

San Jose Civic 

135 West San Carlos Street
San Jose, CA 95113

TABLE OF CONTENTS

Overview	3
Fast Facts	3
Stage Dimensions	4
House Seating Capacities	4
Load In	5
Stagehands	5
Curtains, Softgoods, Masking and Miscellaneous	6
Stage Rigging	6
Lineset	7
Hang/LX Plots	8-11
Lighting	12
Power	12
Sound	12
Video	13
Additional Spaces	13
Pianos	13
Odds and Ends	13
Sky Bar Floor Plan	14
Civic & Montgomery Courtyard Floor Plan	14
Main Level Floor Plan	15
Main Level Reserved Seating Plan	16
Main level Banquet Seating Plan	17
Balcony Level Seating Plan	18
Second and Mezzaine Level Floor Plan	19
Downtown Restuarants and other businesses	20

Overview

The dual-level San Jose Civic completed a multi-million-dollar renovation in 2011 enhancing the experience of this modern and historic venue. The San Jose Civic is an easy fit for a full range of events including general sessions, small meetings, evening galas, banquet dinners, cocktail receptions, performing arts and more. Patrons will enjoy new, customized fixed seating, state-of-the-art sound and HD video systems, renovated and expanded restrooms, renovated concession areas and a new 3-story elevator.

The San Jose Civic is a must-play venue for top acts touring the West Coast. With an intimate view from every seat, the San Jose Civic is an ideal location for popular entertainers and public figures.

Built in 1934, the San Jose Civic has classic Spanish mission-style architecture and has been at the core of San Jose's cultural activity and traditions. Conveniently located in the heart of Downtown, the San Jose Civic provides additional exhibit and general assembly space in conjunction with the nearby Convention Center and Parkside Hall.

The San Jose Civic is located within walking distance of hotels, bars, restaurants, museums and is directly across the street from a Light Rail station stop, making for easy public transportation access. Parking is close at the Convention Center as well as other Downtown lots.

Fast Facts

- Built in 1934 with classic Spanish mission-style architecture, a San Jose historic gem
- Hub of San Jose's cultural activity and traditions
- Dual-level layout and perfect for concerts, performances, general sessions, evening galas, banquet dinners, reunions, proms and much more
- Directly across the street from the Convention Center
- Easy access to parking, public transportation, hotels and restaurants
- Full-service Box Office
- Connected to Montgomery Theater
- Large entry area perfect for cocktail receptions or registration
- Concessions areas throughout
- Flexible seating configuration, including ADA compliant seating
- Undergone \$15 million in renovations, including seating upgrades, new restrooms, new flooring and production upgrades
- Has hosted thousands of well-known entertainers and public figures including Richard Nixon, Frank Sinatra, the Rolling Stones, The Beach Boys, The Grateful Dead, Interpol, Jeff Beck, The Pixies, Wilco and many more
- Dressing Rooms throughout
- VIP areas (Sky Bar Lounges) for private cocktail/VIP receptions or breakout sessions

Stage Dimensions

· Proscenium Width	49' 9"
· Proscenium Height	30' 0"
· Grid Height	64' to beams
· CL to Stage Left Wall	45'6"
· Stage Left Wall to Stage Right Wall	120'6"
· CL to Stage Right Wall	75'
· PL to House Curtain	1' 0"
· PL to US Wall (at CL)	35'
· PL to FOH Control Room	155' 6"

Extra Staging (Riser Decks)

· 4'x8' Single Deck	9
· 4'x4' Single Deck	2
· 36" Legs	8
· 24" Legs	40
· 18" Legs	46
· 12" Legs	43

House Seating Capacities

2,850 maximum seating capacity, theater-style (Section 105, Rows K-S removed to accommodate maximum light and sound mixing area;

3,322 maximum GA configuration including a 20x20 mixing area and GA barricade).

- 1,028 Main Floor seating
- 628 Dress Circle seating (49 obstructed view)
- 1,194 Balcony seating (90 obstructed view)
- 350 Banquet-style event on Main Floor ONLY
- 1,000 Classroom-style event on Main Floor ONLY

ADDRESSES

Location

The San Jose Civic is located at 135 West San Carlos between Market Street and Almaden Blvd.

Mailing Address

The San Jose Civic is located at 135 West San Carlos, San Jose, CA 95113.

Please reference your event in the address line and be advised we are not open to receive packages on Sunday or Monday.

Load In

The two truck, temporary loading dock is located on the west side of the building entered off W San Carlos St. Downstage center there is a 3 stop (stage, floor, basement) lift with a 3000lbs capacity.

Stagehands

General Guideline of Rates and Conditions:

- Concerts and entertainment:
 - Load In is a 4-hour minimum.
 - Performance Call which commences 30 minutes prior to curtain and ends 3.5 hours after curtain, or you shall be billed on the hour for OT.
 - Load Out is a 4-hour minimum or 3-hours if one worked the show call.
- Lectures, corporate parties, commercial and industrial events, trade shows, computer generated presentations, as well as audio and/or video recording, where the product is to be sold to the attendees or the general public. 8 Hour minimums for everyone but loaders who have 5 hour minimums.
- Stagehands break for 15 minutes after 2 continuous hours worked and break for meal after 5 hours worked. Work on stage shall cease for 1 hour during non-paid one hour meal breaks. 30 minute meal breaks shall be paid and the stage hands shall have their meal provided for them by the client. Meal penalty is two times the prevailing rate. Returning from a 1 hour meal break a stagehand receives a 2 hour minimum.
- Work between the hours of Midnight and 7am shall be paid at double time.
- There shall be department heads for Sound, Electrics, Lighting, Video, and Carpentry. The steward is above the call. Standard union rules apply.

Curtains, Soft Goods, Masking and Miscellaneous

2 Black Velour Legs 14'w x 32'h
3 Black Velour Borders 60'w x 8'h, Bottom trim is 26'
1 Full Stage Traveler 60'w x 32'h, located mid stage
1 Full Upstage Black Velour Drape 60'w x 32'h

All legs and boarders are dead hung and are not moveable at all.

Main Curtain

Traveler type, Red

Stage Rigging

Stage to Rigging Steel is 63'. 12 beams in pairs with wells between each pair. First pair on Center.

Wells are about 12.5' apart. 3 options for each beam:

1. As a single point load placed anywhere on the span, 2500 pounds.
2. As two-point loads placed at third points along the span, each load 2000 pounds for a maximum total of 4,000 pounds. Note that this loading assumes that one load is located 12' from the north wall and the second is located 12' from the south wall.
3. As three-point loads placed at quarter points along the span, each load of 1400 pounds for a maximum load of 4,200 pounds. Note that this loading assumes that each load is 9' apart and that end loads are 9' from their respective walls.

HOUSE

60' Downstage truss 14' from the downstage edge. This truss is utilized for rigging typically for traveling lighting trusses of 40' and hangs from four ½ ton motors.

There are 6 rows of circus points starting 14' from the down stage edge.

Each row is 18'8" apart.

There are 6 points to a row with a 1500 lbs capacity (1000 lbs per point for first of six).

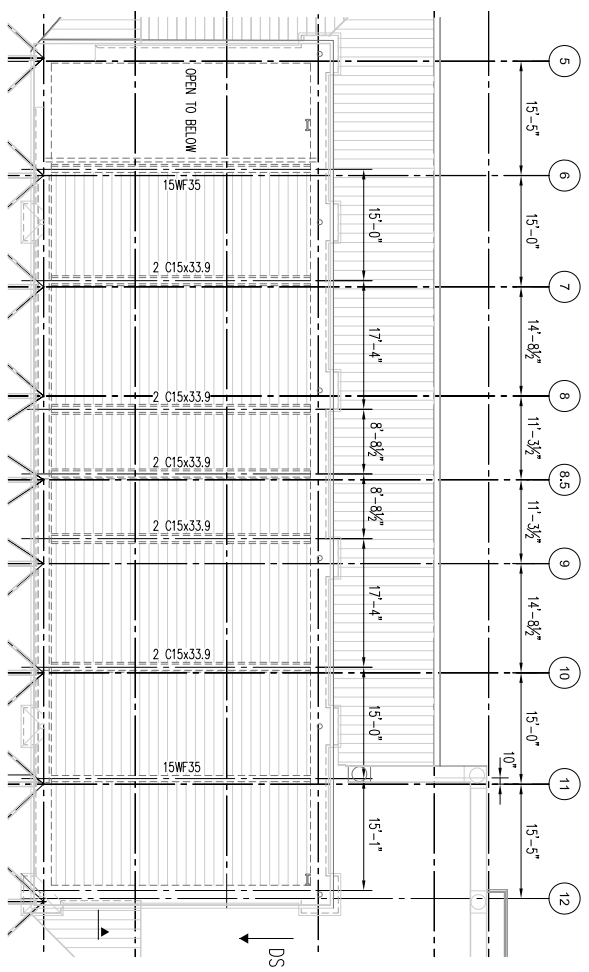
For each row of points:

- First points are 8' off center
- Second set 23' 5" off center
- Third set is 39' 11" off center.

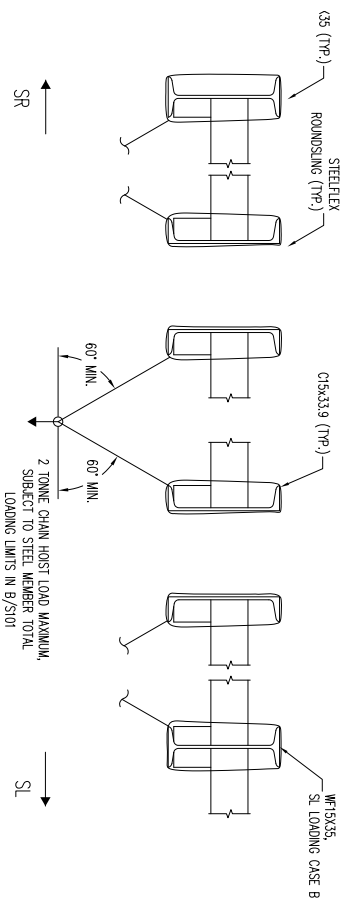
Hang Plot from plaster line

LINE	DEPTH	TYPE	PIECE	Notes
	-4'		Apron	48" DS of Plaster line
1	6"	Dead Hung (DH)	Main Valance	
2	1'	DH	MAIN DRAPE	Traveler type
3	3'	Counter Weight	BANNER BAR	
4	4'	CW		Comes in to 5' off stage floor
5	6' 6"	DH	BORDER	
6	8'	DH	LEGS	
7	9' 6"	CW	BANNER BAR	Comes in to 10' off stage floor
8	13'6"	DH	BORDER	
9	14'	Chain Motors	MS TRUSS	40'x12" box, (2) 1 ton motors
10	15'	Chain Motors	Center Traveller	Acts as mid stage legs as well
11	16'	CW	BANNER BAR	Comes in to 10' off stage floor
12	23' 6"	DH	BORDER	
13	24'	DH	LEGS	
14	26'	Chain Motors	US TRUSS	30" PRT truss (3) 1 ton motors
15	29' 6"	CW	BACKDROP BAR	Comes in to 5' off stage floor
16	31' 6"	DH	UPSTAGE BLACKS	Black backdrop made from velour
	34' 6"		BACK WALL	Back Wall of Stage Space
<u>Batton capacity is 150 lbs each.</u> <u>Battons are not to be used for hanging more than banners.</u>				<u>This is not a functioning fly system and should not be considered as such.</u>

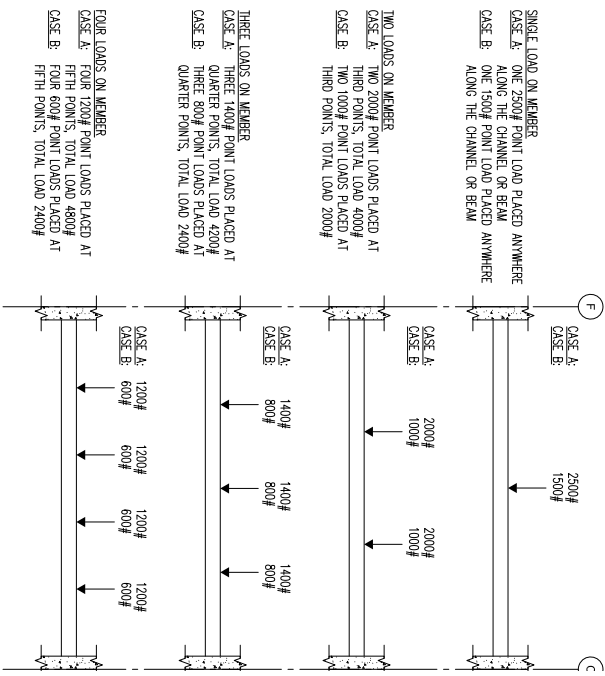
GRID IRON CHANNELS AND WE BEAMS MAY BE LOADED TO MAXIMUM LOADS SHOWN IN THE LOADING DIAGRAMS BELOW.
 NOTE THAT ALLOWABLE LOADING IS FOR EACH CHANNEL IN EACH WELL.
 CASE A: REFERS TO ALL CHANNELS (C15X33.9) AND SR BEAM (W15X35)
 CASE B: REFERS TO SL BEAM (W15X35)
 SEE BRIDLE DETAIL FOR MORE INFORMATION.



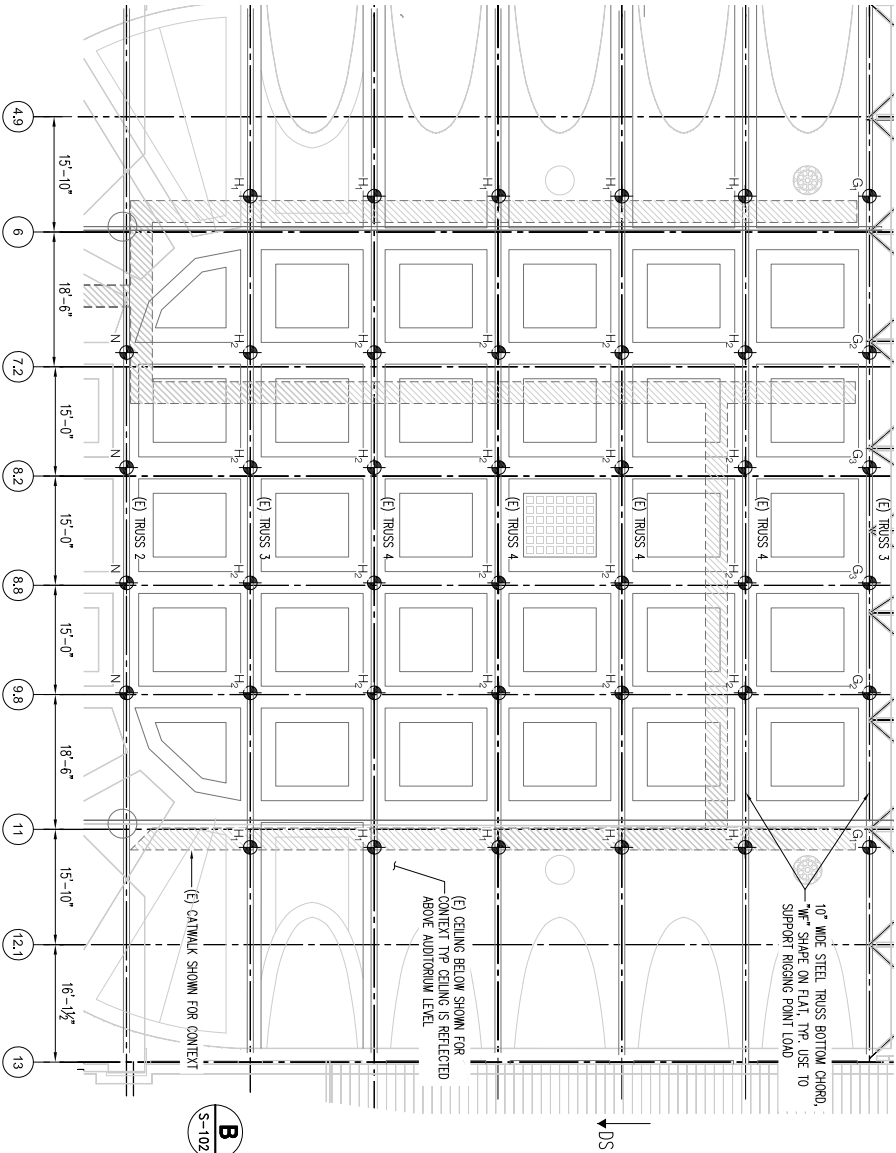
A GRID IRON PLAN VIEW
 S-101 1/16"=1'-0"



C SECTION VIEW OF BRIDLE DETAIL, SR TO SL
 S-101 N.T.S.



B RIGGING LOADING ON GRID IRON
 S-101 N.T.S.



A
RIGGING LOADING LOCATIONS ON AUDITORIUM
ROOF TRUSS BOTTOM CHORD

S-102/

NOTE:

INDICATES LOCATION OF POINT LOAD HING FROM BOTTOM CHORD OF CROSS STAGE ROOF TRUSS.
LABELS SHOWN RELATE TO ALLOWABLE RIGGING LOADS IN TABLE.

1/16"=1'-0"

BOTTOM CHORD OF CROSS-STAGE ROOF TRUSS MAY BE LOADED TO MAXIMUM LOADS OUTLINED BELOW

GRIDLINE N	LOAD CASE A	N = 2000#
LOAD CASE B	H ₁ = 1500#, H ₂ = 1500#	
LOAD CASE C	H ₁ = 0#, H ₂ = 2000#	
LOAD CASE D	H ₁ = 1500#, ANY TWO POINTS H ₂ = 2000#, REMAINING POINTS H ₂ = 1000#	
LOAD CASE E	G ₁ = 1500#, G ₂ = 1000#, G ₃ = 1500#	
LOAD CASE F	G ₁ = 0#, G ₂ = 1500#, G ₃ = 2000#	
LOAD CASE G	G ₁ = 1500#, G ₂ = 1500#, G ₃ = 1000#	
LOAD CASE H	G ₁ = 1500#, G ₂ = 500#, G ₃ = 2000#	

AN EXISTING SPEAKER STACK UPSTAGE LIMITS THE RESERVE CAPACITY AT POINTS G₂ BY 500 LBS, WHICH IS REFLECTED IN THE RIGGING CAPACITIES LISTED.
CAPACITIES LISTED DO NOT INCLUDE THE WEIGHT OF THE CHAIN HOST.
CAPACITIES LISTED ALREADY CONSIDER 25% IMPACT FACTOR OF CHAIN HOSTS.
LOADS ON ONE TRUSS DO NOT INFLUENCE LOADS ON ANY OTHER TRUSS.

B
RIGGING LOADING ON AUDITORIUM ROOF
TRUSS BOTTOM CHORD

S-102/

Lighting	
Chauvet COLOURado PXL 14	
Bar 16	
Chroma Conference 48	4
ETC S4 LED 32 LS ETC 14	
28" HD	
Marin EDA 600	20
Phosphorescence	



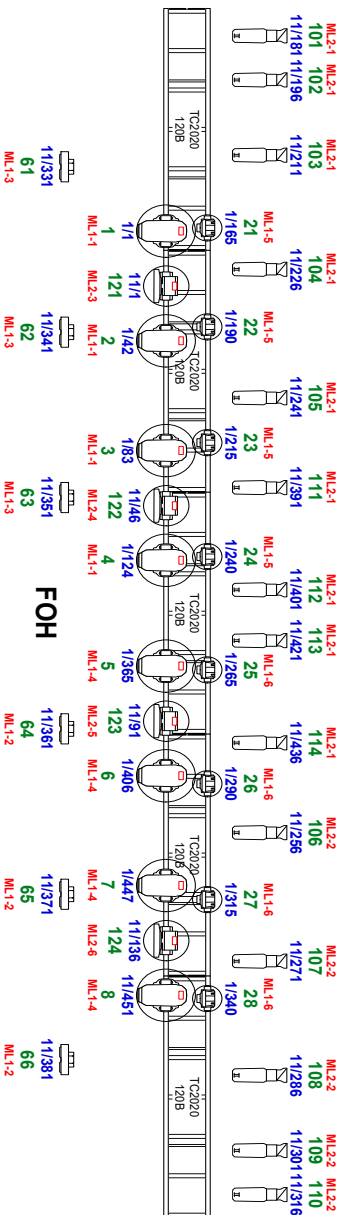
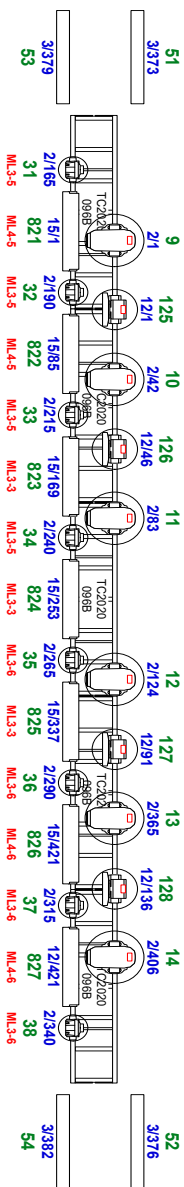
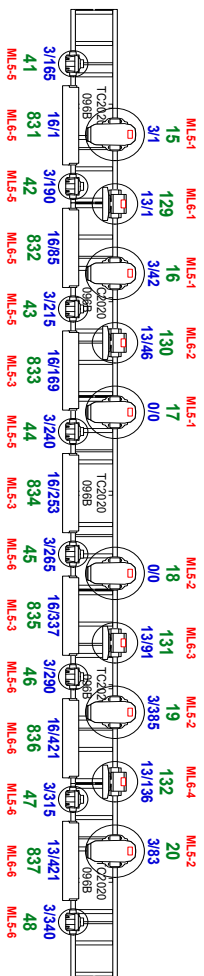
Chauvet Spotlite Key 4 6



Martin Mac Aura XB 24



Elation Pulse Panel FX 12



Plot Notes:

Trusses are Nonspecific Distances Apart.

Organ Loft Fixtures are generic 3CH RGB Strips.

DMX Distro is from Luminex 12-port node in jump.

Mid and US Truss have 2x spare 208V circuits available.

FOH Truss has 1x spare 110V multi with stage pin fanout currently.

USR has a spare 110V Multi for the floor.

Note: Purpose:

Blinders Hung off the Top Cord Facing Audience

San Jose Civic Auditorium Plot Refresh October 2025

San Jose Civic House Plot

Team San Jose

San Jose Civic Auditorium

Drawn By: Neko

Pdantic Lighting

Date: 10/29/2025

Page 1 of 1

Lighting

4 – LYCIAN XL 1290 spotlights
Grand MA 3 Lite lighting console
20- Martin ERA 600 spot Fixtures
4- LED RGB Generic 3CH
24- Martin Aura XB wash fixtures
14 – Source Four Lustr all 26 Degree
4 – Source Four Leko all 26 Degree
12- Elation Pulse Panel 45CH Strobes
6 – Chauvet Strike Audience Blinders 4 Lights
24- Chauvet PXL16 Bars 84CH
1 – Sensor 96x2.4K Dimmer
1 – FOH Snake (4 – 5 pin, 1 – 3 pin, 2 – CAT5, 1 – 120v)
1 – DF50 Hazer

Power

1200 amps 3 phase TOTAL power on stage. All cam lock or bare tails.
Lighting: 2 - 400amps 3 phase Up Stage Right.
Sound: 2 - 200amps (isolated) 3 phase Downstage Left and Right.
Lighting fed from 800 amp distro panel.
Sound is fed from an isolated 400 amp distro panel.

Sound

Yamaha CL 5 Front of House Console
18 – D&B KSL 8 Line Array (9 boxes a side)
Hung from single point each downstage of proscenium, 1450lbs max load
6 – D&B SL-GSUB ground floor stacked across the front of the stage
4 – D&B Y10P Front Fills
2 – Lake LM44 processors
D&B amplification
2 – Yamaha Rio 3224-D2 Stage boxes
1 – Whirlwind STS-SR358 1X3 Splitter
1 – Tascam CD-RW901 Player/Recorder
4 – Shure UR2 4S Wireless (Just Handheld)
4 – Shure UR2 4d Wireless (Handheld/Bodypack Combos)
4 – Shure UR1 Wireless
4 – VP-7212-DPAN Side Fill Speakers
2 – VP7212MDP Wedge Monitor Speakers

10 – Stations of Wired ClearCom

Power Distributor has Camlock Passthrough

Snake runs are around the perimeter of the floor with 12" pull tubes under walkways house left, house right and at FOH position. 250' snake will reach to FOH

Video

2 – 16'x9', 2.9 mm Absen LED walls hung left and right of the proscenium. 1920x1080 resolution. They do not come down.
2 – Novastar MCTRL600 processors, Nov-CT-Mars v4.90 software
1 – Magnaimage Scaler
1 – Black Magic ISO 8 Video Switcher
1 – Apple Mac Studio and Mac mini
1 – Blackmagic PYXIS 6K Cinema Box Camera (Canon EF Mount)
1 – Blackmagic Design URSA Broadcast G2 with the Fujinon LA16x8BRMXB1A Lens
3 – JVC Cameras GY-HD250-CSTNL with studio packages (3 standard lenses and 1 long throw)
4 – Panasonic HE-70 PTZ cameras, 2 mounted, 2 mobile
1 – 40" Samsung Floor Monitor

Additional Spaces

Dressing Rooms

All Furnished. There is no elevator to the second level. All large cases must remain on stage level.
Drawings available upon request

<u>Dressing Room</u>	<u>Dimensions</u>	<u>Amenities</u>
<i>Stage Level</i>		
Dressing Room 1	24'7" x 15'6"	Bathroom, Handicap Bathroom, Sink, Toilet, Shower, Makeup Counter, Couches, Television
Dressing Room 2	24'7" x 15'6"	Bathroom, Handicap Bathroom, Sink, Toilet, Shower, Makeup Counter, Couches, Television
<i>One Level Above Stage</i>		
Dressing Room 3	24'4" x 14'10"	Television, Couches, Sink, Makeup and Mirror Counter, Washer, Dryer
Men's Bathroom	12'9" x 7'4"	Toilet, Shower, Sink
Dressing Room 4	22'4" x 7'5"	Couches, Makeup and Mirror Counter
Dressing Room 5	14'5" x 7'5"	Sink, Makeup and Mirror Counters
Dressing Room 6	15'3" x 7'5"	Sink, Makeup and Mirror Counters
Women's Bathroom	12'9" x 7'4"	Toilet, Shower, Sink
Dressing Room 7	20'3" x 21'	Television, Couches, Table, Makeup and Mirror Counters
Dressing Room 7 1/2	24'6" x 14'	Lounge and Mirror Counter

Production Office

We usually put production in Dressing Room 1 on stage.

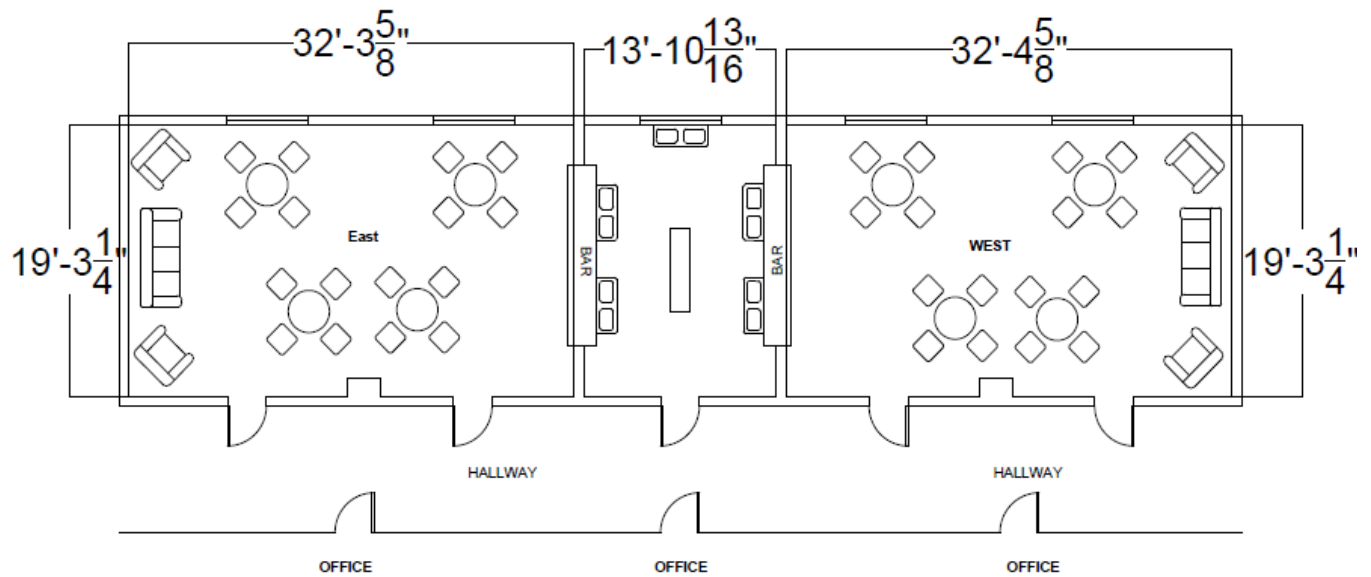
Pianos

House has no piano.

Odds & Ends

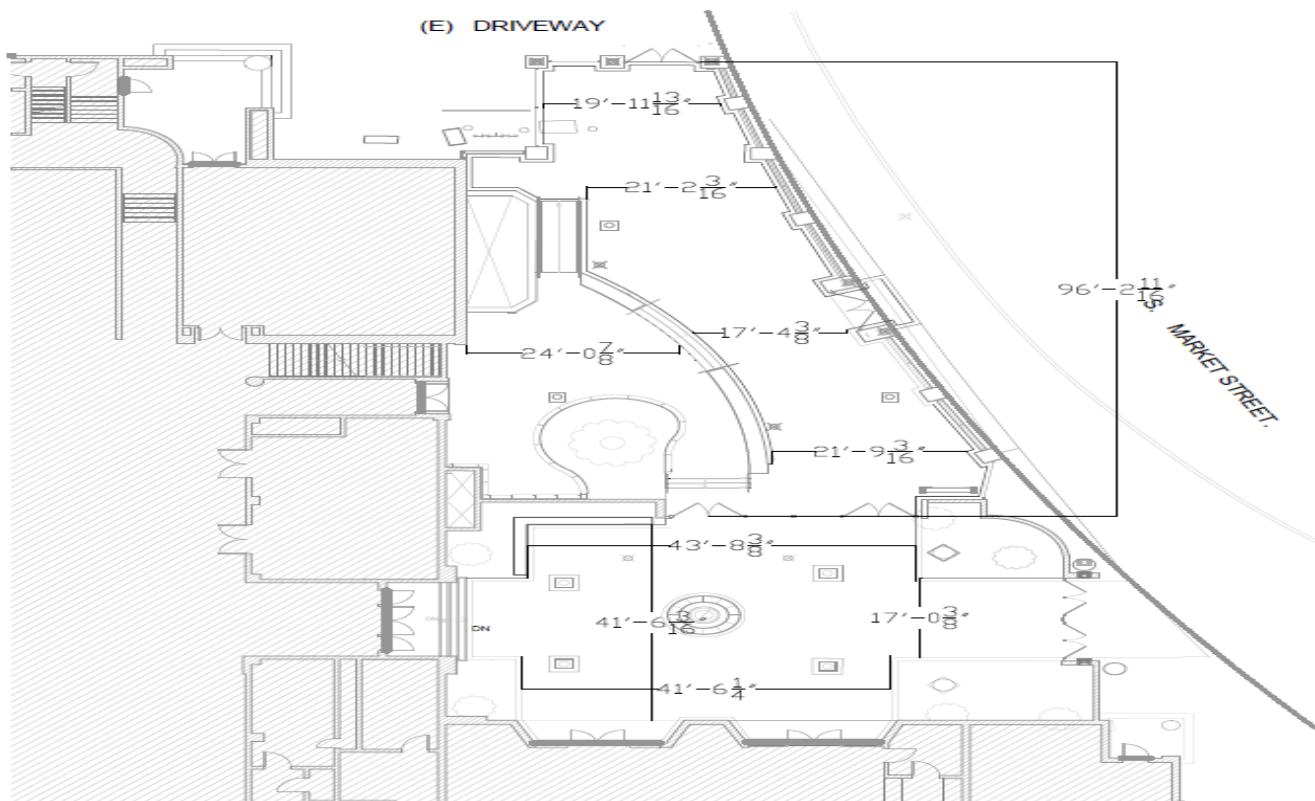
Theater has a 36' genie personnel lift.

Sky Bar

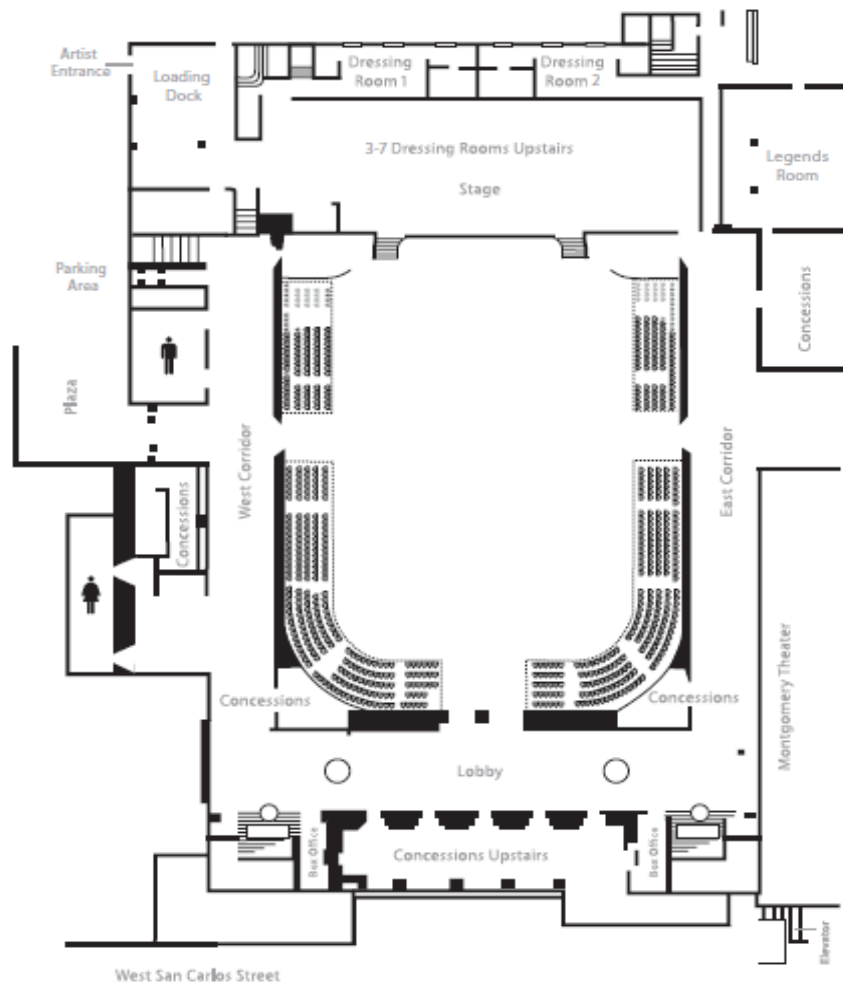


Montgomery Courtyard & Civic Courtyard

*Pricing to add the Montgomery Courtyard along with availability of the space is on a case by case basis. Please contact your Sales Manager with any questions.



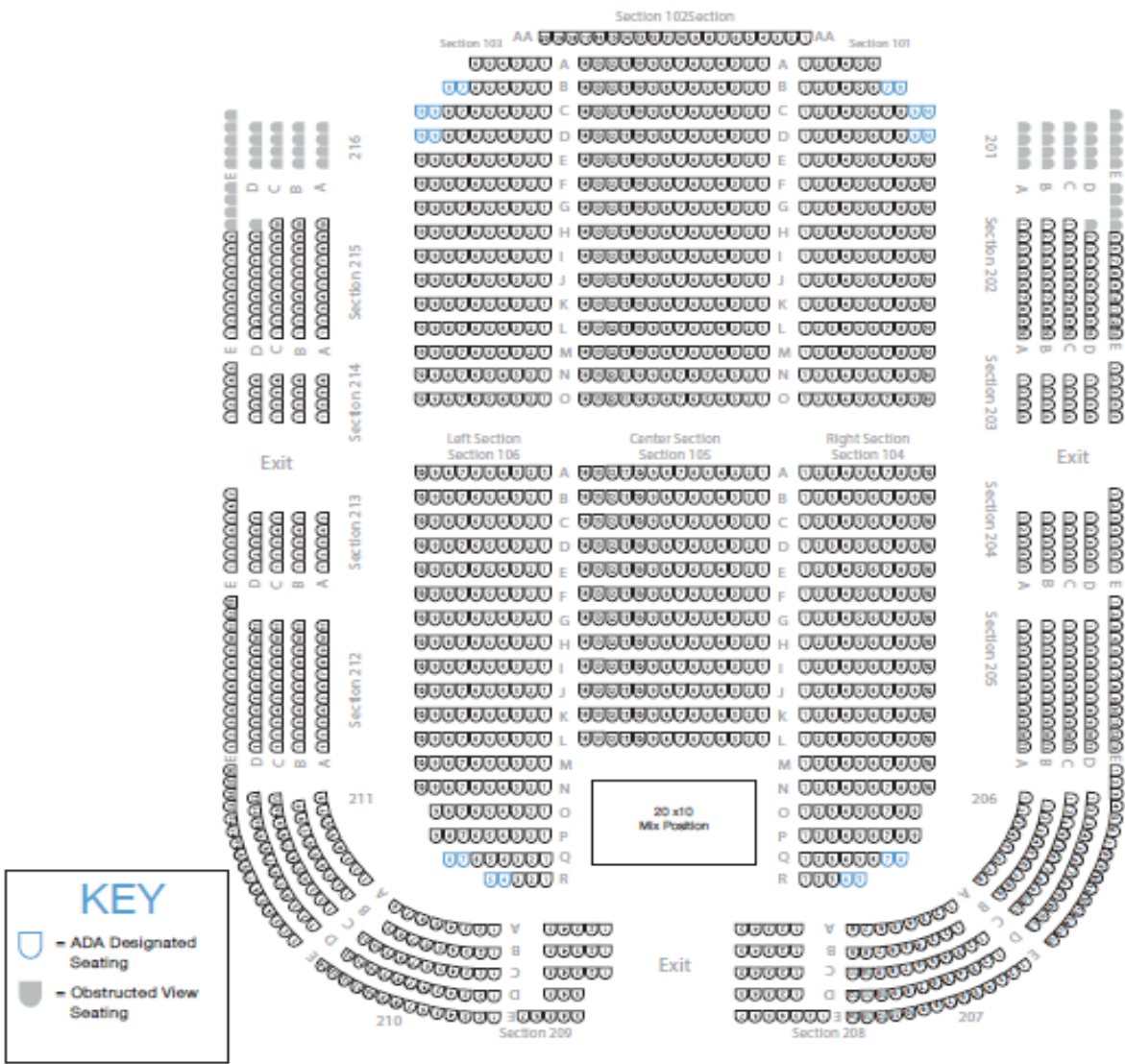
MAIN LEVEL FLOOR PLAN



Location	Capacity	Main Level Capacity	Main Floor Section Seating Capacity	Dress Circle Section Seating Capacity	Balcony Level Seating Capacity	Stage Size (W x D)	Stage Proscenium Opening (W x H)	Main Floor Size	Ceiling
San Jose Civic	2,850 Reserved 3,322 GA	1,656 Reserved 2,128 GA	1,028 Reserved 1,500 GA	628 Total (including 52 obstructed view seats)	1,194 Total (including 90 obstructed view seats)	112' x 35'	49' 9" x 30'	79' x 118'	43'

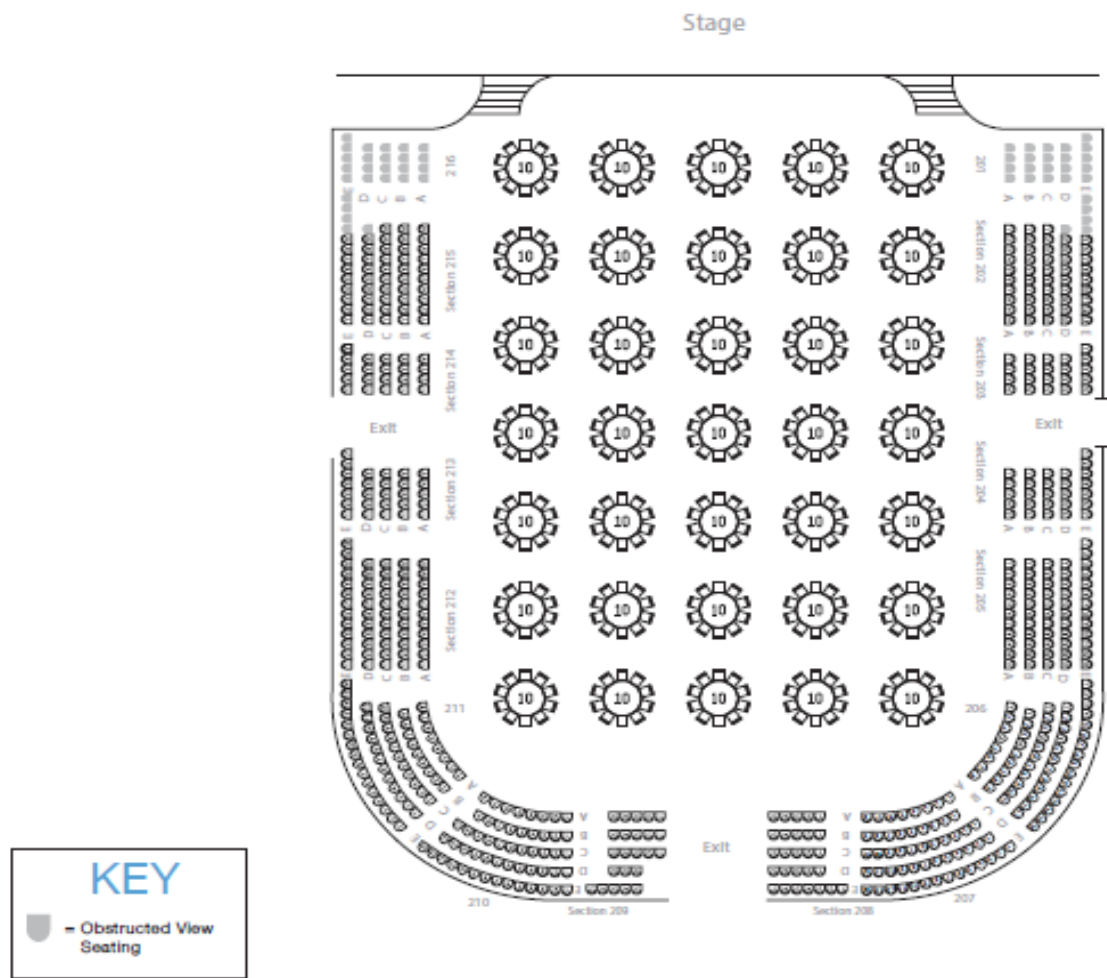
MAIN LEVEL RESERVED CONCERT SEATING PLAN

Stage



Location	Capacity	Main Level Capacity	Main Floor Section Seating Capacity	Dress Circle Section Seating Capacity	Balcony Level Seating Capacity	Stage Size (W x D)	Stage Proscenium Opening (W x H)	Main Floor Size	Ceiling
San Jose Civic	2,850 Reserved 3,322 GA	1,656 Reserved 2,128 GA	1,028 Reserved 1,500 GA	628 Total (including 52 obstructed view seats)	1,194 Total (including 90 obstructed view seats)	112' x 35'	49' 9" x 30'	79' x 118'	43'

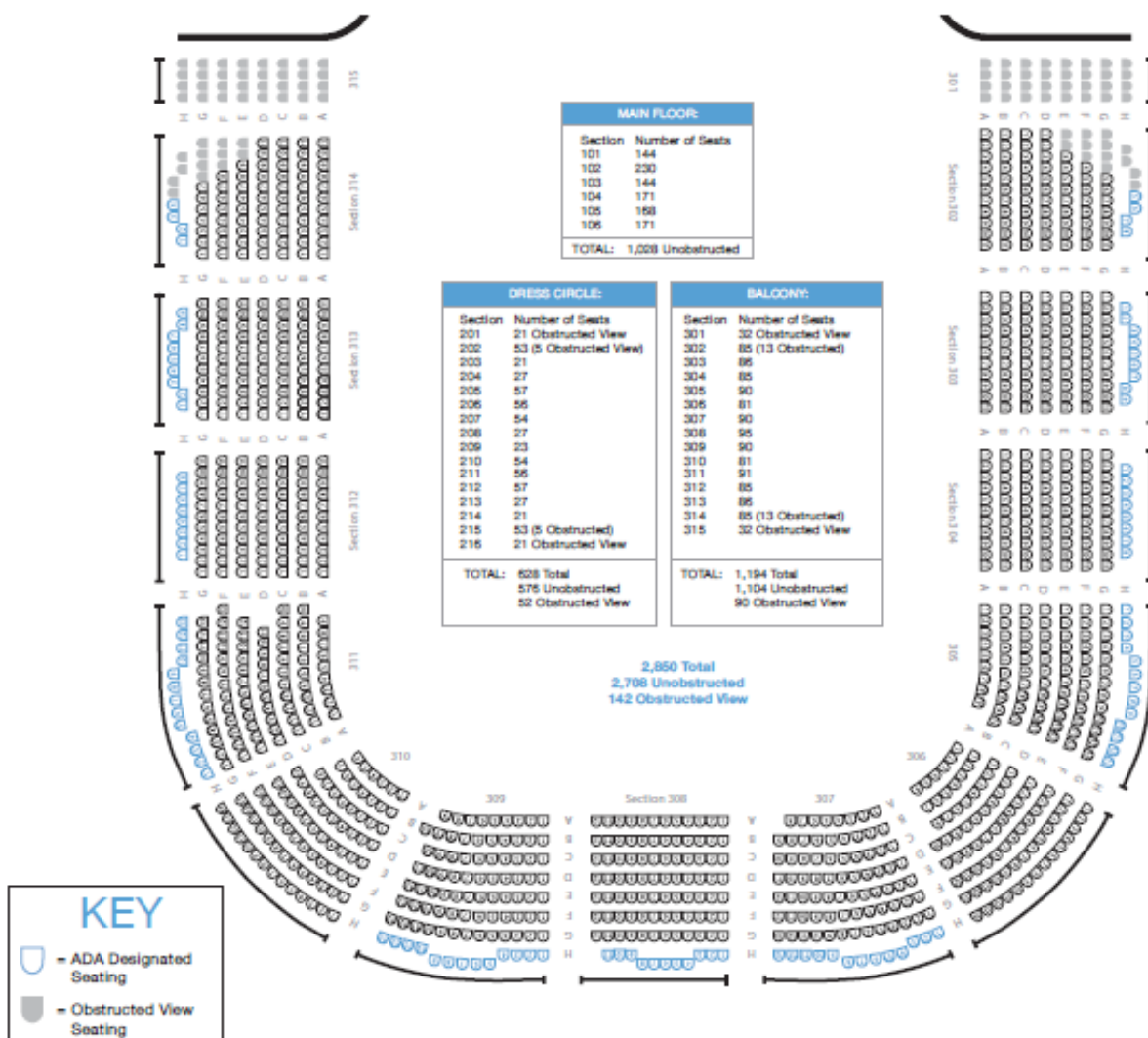
MAIN LEVEL BANQUET SEATING PLAN



Location	Capacity	Main Level Capacity	Main Floor Section Seating Capacity	Dress Circle Section Seating Capacity	Balcony Level Seating Capacity	Stage Size (W x D)	Stage Proscenium Opening (W x H)	Main Floor Size	Ceiling
San Jose Civic	2,850 Reserved 3,322 GA	1,656 Reserved 2,128 GA	350 Banquet*	628 Total (including 52 obstructed view seats)	1,194 Total (including 90 obstructed view seats)	112' x 35'	49' 9" x 30'	79' x 118'	43'

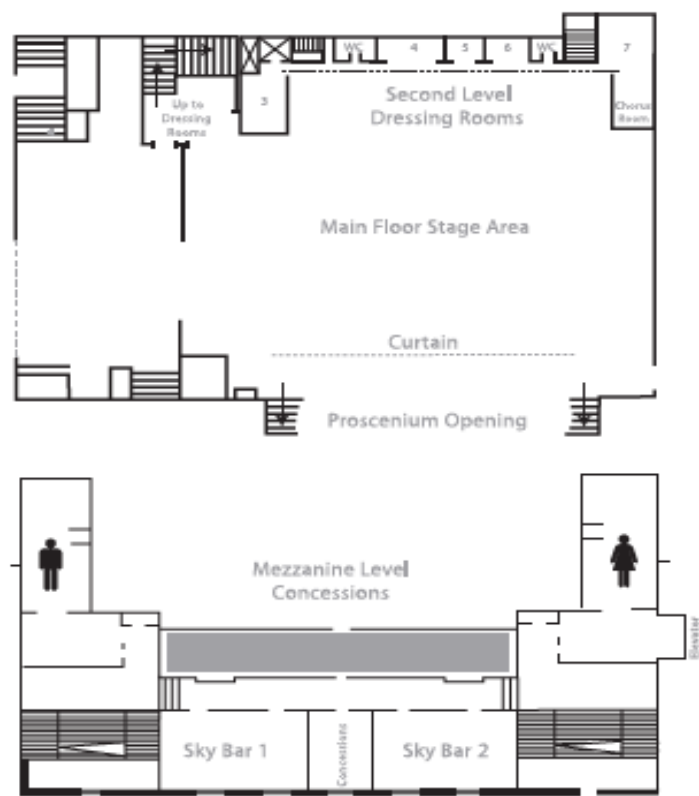
*Seating setup and capacity subject to change

BALCONY LEVEL SEATING PLAN



Location	Capacity	Main Level Capacity	Main Floor Section Seating Capacity	Dress Circle Section Seating Capacity	Balcony Level Seating Capacity	Stage Size (W x D)	Stage Proscenium Opening (W x H)	Main Floor Size	Ceiling
San Jose Civic	2,850 Reserved 3,322 GA	1,656 Reserved 2,128 GA	1,028 Reserved 1,500 GA	628 Total (including 52 obstructed view seats)	1,194 Total (including 90 obstructed view seats)	112' x 35'	49' 9" x 30'	79' x 118'	43'

SECOND & MEZZANINE LEVEL FLOOR PLAN



Location	Dimensions	Ceiling	Square Feet	Capacity (Theater Style)	Capacity (Banquet Style)	Capacity (Classroom Style)
Sky Bar 1	33' x 19'	11'	620	56	30	32
Sky Bar 2	33' x 19'	11'	620	56	30	32

EXPLORE DOWNTOWN

#DTSJ



sjdowntown.com