
Technical Specifications

California Theatre



345 S. First Street
San Jose, California 95113

TABLE OF CONTENTS

Overview	3
Fast Facts	3
House Seating Capacities	3
Stage Dimensions	4
Size of Space in Front of Curtain	4
Front of House Dimensions	4
Load In	5
Stagehands	5
Stage Rigging	6-8
Curtains, Softgoods, Masking and Miscellaneous	8
Lighting	8-9
Power	9
Sound	10-11
Video	11
Additional Spaces	12-14
Dressing Rooms	12-13
Wardrobe	13
Laundry Facilities	14
Makeup	14
Amenities	15
Pianos	15
Odds and Ends	15
Seating Plan	16
Mezanine Level Floor Plan	17
Orchestra Level Floor Plan	17
Balcony Level Floor Plan	18
Lower Level Dressing Rooms	19
Map and QR code to downtown Businesses	20



Overview

The California Theatre is one of the best examples of the Art Deco style motion picture houses from the late 1920s and adds glamour and class to any meeting, film screening, concert or private party.

The theater boasts comfortable seating and great acoustics inside the main theater and features three additional meeting rooms with state-of-the-art audio and visual technology as well as a courtyard that can be utilized for a variety of events. The theater, with its grand foyer, provides an elegant option for presentations, post meeting shows or cocktail receptions.

Located across the street from the San Jose Convention Center, the theater is within easy walking distance of several parking lots and numerous restaurants within the creative hub of Downtown known as the South First Area (SoFA) District.

House Seating Capacities

- 1,122 seating capacity including up to 14 Wheelchair seats
 - 687 Orchestra seats (677 Fixed and up to 10 Wheelchair seats included)
 - 196 Mezzanine seats (192 Fixed and 4 Wheelchair seats included)
 - 239 Grand Tier seats

Fast Facts

- Across the street from the Convention Center
- 1,122 seating capacity, including up to 14 wheelchair seats
- State-of-the-art audiovisual technology
- Home of Opera San Jose and Symphony Silicon Valley
- Built in 1927 as the Fox Theatre, a Hollywood motion picture house
- \$80 million in renovations; completed and reopened in 2004
- Ranks among the world's most intimate Opera houses
- Houses a 1927 Wurlitzer console organ with 1521 pipes plus symphonic percussion
- Perfect for film screenings, presentations, performances, cocktail receptions, concerts, weddings, etc.
- Easy access to parking, public transportation, hotels, and restaurants

Local Downtown Restaurants & Activities

- <https://sjdowntown.com/eat-drink/>
- <https://sjdowntown.com/health-beauty/>
- <https://sjdowntown.com/hotels/>

Stage Dimensions

· Proscenium Width	43' 10"
· Proscenium Height	31' 7" at Center (Valance 25' at Center)
· Grid Height	86' 6"
· CL to Stage Left Wall	40' 7"
· Stage Left Wall to Stage Right Wall	92'
· CL to Stage Right Wall	51' 5"
· PL to House Curtain	1' 6"
· PL to US Wall (at CL)	41'
· PL to FOH Control Room	84'
· PL to Spot Booth	113' 8"

Size of Space in Front of Curtain

· Shows 19' at Center	15' at Sides
	43' wide at Proscenium
	45' wide at Edge of Pit

Front of House Dimensions

· Courtyard	Length: 67'1" Width: 39'1" Height: 14'8"
· 1 st Level Market Street Corridor	Length: 90'11" Width: 16'4" Height: 10'5"
· Market Street Lobby (Back Theatre Entrance)	Length: 28'7" Width: 47'11" Height: 21'2"
· Mezzanine Foyer Balcony (Overlooking Market St. Lobby)	Length: 53'8" Width: 9'9" Height: 9'1"
· Mezzanine Foyer/Concessions Area	Length: 103'0" Width: 21'2" Height: 13'2"
· Main Theatre Lobby (1 st Street)	Length: 78'3" Width: 26'4" Height: 28'3"

Load-In

Dock Entrance Address 344 South Market Street (not the mailing address)
San Jose, California 95113

- Street Level load in, then down ramp.
- No truck height dock. No Truck loading ramp available.
- Loading Door at Street: 12'-0" W x 14'-6" H.
- Loading Dock area: Offstage right 26' x 60'.
- Loading Door at Stage: 13'-11" W x 17'-11" H.b. 1-ton stacker motor in Loading dock area
- Note: A 24' Bobtail may be backed into the dock area.

It should also be noted that the street outside our loading door is State HWY 82. This means that additional restrictions as far as parking, lane blockage, etc. apply. If you anticipate anything in special needs, you should be in touch with us WELL in advance. In some cases, we can accommodate you, however, State Highway restrictions are strict.

Stagehands

General Guideline of Rates and Conditions:

- Entertainment: Load In is a 4-hour minimum.
Performance Call which commences 30 minutes prior to curtain and ends 3.5 hours after curtain or you shall be billed on the hour for OT.
Load Out is a 4-hour minimum or 3 hours if one worked the show call.
- Lectures, corporate parties, commercial and industrial events, trade shows, computer-generated presentations, as well as audio and/or video recording, where the product is to be sold to the attendees or the public. 8 Hour minimums for everyone but loaders who have 5-hour minimums.
- Work between the hours of Midnight and 7am shall be paid at double time.
- There shall be department heads for Sound, Electrics, Video, and Carpentry. The steward is above the call. Standard union rules apply

Meals & Breaks:

- Stagehands break for 15 minutes after 2 continuous hours worked and break for a meal after 5 hours worked.
- Work on stage shall cease for 1 hour during non-paid one-hour meal breaks.
- 30-minute meal breaks shall be paid and the stagehands shall have their meal provided for them by the client.
- Meal penalty is two times the prevailing rate.
- Returning from a 1-hour meal break a stagehand receives a 2-hour minimum.

Stage Rigging

Type: Single purchase counterweight. 60,000 lbs available

Line Sets 59 sets on 6" or 8" centers

Side ladders 2' offstage of pipe ends

Tab Pipes 2' offstage of ladders

House pipes 63' schedule 80

In trim 4'-0" above deck

All trims measured to bottom of pipe

Out Trim 6" 74'-6" above deck

Out Trim 8" 81'-4" above deck

Travel 6" 70'-6" above deck

Travel 8" 77'-4" above deck

House sets are not kickable; however, roller diverters are workable. None are in stock at present.

25 Spot wheels, plus head and muling block available, with 5/8" Multiline II for 5 hemp sets available.

No hemp, all Dacron/ cotton blend (Multiline II)

1500 feet loose line available.

Sweeps available for full wrap cyclorama, work with tab pipes and lineset 59. This is a MAJOR PROJECT, but is doable with advance notice.

LINE	DEPTH	PIPE TO PIPE	PIECE	TRIM	NOTES
AP-2	2'-5"		SUPERTITLE SCREEN		
AP-1	1'-11"		MAIN VALANCE		
Smoke Pocket	0-0"				
1	0'-8 1/2"				
2	1'-6"		MAIN CURTAIN		
3	2'-2"		ZETEX		
4	2'-8"		1ST ELECTRIC		
Projection Screen	3'-11"		MOVIE SCREEN		Doesn't kick- out trim is 55'-2" to BOTTOM
5	5'-0"		BORDER		
6	5'-5"		LEGS		
7	5'-11"				
8	6'-4"				
9	6'-11"				
10	7'-5"				
11	7'-11"				
12	8'-5"				
13	9'-0"				
14	9'-6"				
Purlin	10'-0"				Cannot hang at purlin
15	10'-6"		BORDER		

16	11'-3"		LEGS		
17	11'-11"				
18	12'-8"				
19	13'-3"				
20	13'-11"				
21	14'-7"				
22	15'-3"				
23	15'-11"				
24	16'-7"				
25	17'-6"		BORDER		
Purlin	18'-0"				Cannot hang at purlin
26	18'-6"		LEGS		
27	19'-4"		MID STAGE TRAVELLER		
28	20'-0"				
29	20'-8"				
30	21'-4"				
31	21'-11"				
32	22'-7"				
33	23'-3"				
34	23'-11"				
35	24'-7"		BORDER		
36	25'-5"		LEGS		
Purlin	26'-0"				Cannot hang at purlin
37	26'-6"				
38	27'-4"				
39	27'-11"				
40	28'-7"				
41	29'-4"				
42	29'-11"				
43	30'-8"				
44	31'-3"				
45	31'-11"		BORDER		
46	32'-7"		LEGS		
47	33'-6"				
Purlin	34'-0"				Cannot hang at purlin
48	34'-4"				
49	35'-0"				
50	35'-5"				
51	36'-0"				

52	36'-6"				
53	36'-11"				
54	37'-5"				
55	37'-11"				
56	38'-5"				
57	39'-0"				
58	39'-6"		UPSTAGE TRAVELLER		
59	40'-6"		WHITE LENO CYC		

Curtains, Soft Goods, Masking and Miscellaneous

10 Black Velour Legs	13'-9"w x 28'h
1 Black Velour Border	12'-0"h x 95'-0"w
5 Black Velour Borders	8'-0"h x 95'-0"w
8 Black Velour Tabs	6'-5"w x 32'-0"h
2 Full stage Travelers	33'-6"h x 56'-0"w
1 White Leno Bounce/ Cyclorama	30'-0"h x 63'-0"w
1 Black Sharks tooth Scrim	30'-0"h x 63'-0"w

Hang varies widely and rarely stays the same for more than one event, please call ahead for current information.

Main Curtain

Traveler type or guillotine.

Lighting

Hang varies widely and rarely stays the same for more than one event, please call ahead for current information. Front and back wash easily done day of.

Console:

ETC GIO 4K, 20 channel Fader wing, EOS RPU, Gateways, (4) External monitors

Moving Lights:

9 Vari*lite VL 2600

Conventional:

ETC Source 4 ellipsoidal- 575w

5° 15

10° 21

ETC Source 4 ellipsoidal- 575w

15-30° Zoom 14

19° 111 Plus 20 Barrels

26° 162 Plus 25 Barrels

36° 142 Plus 25 Barrels

50° 20 Plus 10 Barrels

36 ETC S4 Lustr 2
10 ETC Lustr 3 -10
6 ETC Lustr 3 - 14

1k Fresnels

30 DeSisti Monet

2k Fresnels

30 DeSisti Monet

Pars

74 Source 4 575w

All include full lens kit (vn-wide)

10 Parnel 575w (usually work ETC Source 4 ellipsoidal- 575w)

20 ETC Colorsource Par Deep Blue (Also available with medium lenses)

Cyc Fixtures

16 Colorforce II 72

10 Colorforce II 12 in (pulpits and Juliets)

Followspots

Lycian 1290 XLT 2KW Xenon; 2 each Not Removable

Followspot booth doubles as projection booth, room for two Followspots, additional room outside booth for two additional spots.

Booth Power

4 each 30A Single Phase Twistlocks/ Breakers

35mm Projectors

These are NOT movable, for any reason. Do not expect to use those ports for any other equipment.

Power:

2 - 400amp 3 phase Up stage right

1 - 225 amp 3 phase (isolated) up stage right

1 - 250 amp 3 phase Up stage left

Sound:

Console: (2) Yamaha CL3, 64 mono, 8 stereo inputs
2 Rio 3224-D2 stage boxes, 32 M/L inputs, 16 analog outputs, 4 Stereo AES outputs
2 D&B DS10 Processors

Speakers:

D&B Y8 Speaker system
10 cabinets per side, flown
8 Y series subwoofers, ground stacked
4 D&B E8 loudspeakers, under balcony fills
6 D&B E6 Loudspeakers, front fills
2 JBL Eon 712 speakers
D&B amplification

Mic Package:

10 Shure SM58
10 Shure SM57
6 Shure KSM 137
4 Shure MX 202B/C
4 Shure KSM 32
1 Shure Beta 52
1 Shure SM 91A
4 Shure SM 81
6 Sennheiser 904
6 Sennheiser 604
2 Radial Pro D2 stereo DI
4 Radial J48 active DI
4 Radial JDI passive DI
2 Neumann TLM193

Wireless:

8-channels of Wireless microphone includes:

4-Shure ULXD4D dual channel digital wireless receiver
8-Shure ULXD1 digital wireless body pack transmitter
8-Shure WL184 super cardioid lavalier microphone
8-Shure ULXD2/SM58 digital wireless HH transmitter
6-Countryman E6 microphones (2-Light Beige, 2-Tan, 2-Cocoa)

Communications:

10- Clearcom Freespeak Wireless Com
Clear- Com 4 channel headset system
Catwalk Announce
Tech and dressing area page and monitor system
Lobby announce and page system

Road Console

House mix position located off center house right or left in front of cross aisle. Also available with more seats affected is center house, remove 12 seats plus shadow behind mix. Alternate location rear of house which would entail more seats removed. Cable run to Stage is 250' from Control Room/ Rear of House, 200' from Center of House.

Tie in to house system via XLR connectors

Plenum access requires seat removal.

Tie Lines

Extensive audio and video tie lines are available. All audio are Lo z balanced, very high quality, may be used as mic or line level.

ADD PINOUT ON XLR-3

All video tie lines are RG 6 equivalent or better.

Audio/ Video patch bays in control room at rear of orchestra.

Video:

70 LED Tiles ROE Diamond 2.6mm (18x9.84ft screen)

20" Truss

2-1ton motors

3-Panasonic PTZ (Mounted on Balcony rail)+ Controller

Blackmagic Design ATEM 2 M/E Constellation UHD 4K Switcher

Blackmagic Design HyperDeck Studio 4K Pro – Professional Broadcast Deck & Recorder

Projection

1 Christie D20WU-HS Projector

1 Christie 4.0-7.2 Long throw lens

1 Christie .84- 1.02:1 Short throw lens

1 Epson 7k lumen projector

1 Epson 1.19-1.62 lens

1 Analog Way Saphyr switcher

1 Mac Mini with 2 Monitors

1 Stumphl 24' x 13.5' Screen, FP & RP fabrics, full dress kit

Additional Spaces

Dressing Rooms

The California is well equipped with dressing rooms. However, they are split between the basement and the second floor. As with load in, you should plan for your cast to take a little time to get on stage. This is probably a good time to emphasize that the backstage elevator is SLOW and your cast should not count on it in a rush situation. Besides, they need the exercise, right? Seriously, the elevator is rather high capacity, and that means very slow speed. Cast should plan on using the stairs if at all possible.

LOWER LEVEL DRESSING ROOMS

Make-Up Room LL-30

- Width 17' 9" – Length 29' 4"
- Seats 27 People
- 2 Make-up counter
- 2 Shampoo backwash units

Dressing Room LL-45

- Width 14' 10" – Length 34' 6"
- Seats 12 people
- Restroom provided (2 sinks, 2 showers and 2 toilets)
- 2 Make-up counter

Dressing Room LL-46

- Width 15' 2" – Length 34' 6"
- Seats 12 People
- Restroom provided (2 sinks, 2 showers and 2 toilets)
- 3 Make-up counter

Dressing Room LL-48

- Width 16' 1" – Length 34' 6"
- Seats 12 people
- Restroom provided (2 sinks, 2 showers and 2 toilets)
- 2 Make-up counter

Dressing Room LL-49

- Width 10' 10" – Length 29' 3"
- Seats 6 people
- Restroom provided (Shower, Sink and toilet)
- Make-up counter
- Costume rack provided

Dressing Room LL-50

- Width 10' 10" – Length 29' 2"
- Seats 4 people
- Restroom provided (shower, sink and toilet)
- Make-up counter
- Costume rack provided

Dressing Room LL-55

- Width 20' 0" – Length 24' 2"
- Seats 4 people
- Restroom provided (shower, sink and toilet)
- Make-up counter
- Costume rack provided

Dressing Room LL-56

- Width 12' 4" – Length 12' 1"
- Seats 4 people
- Restroom provide (shower, sink and toilet)
- Make-up counter
- Costume rack provided

Musicians Room LL-59

- Width 25' 11" – Length 30' 11"
- Seats 20 People
- Lockers Provided
- Both men's and women's restroom provided
- Kitchenette provided (microwave, sink and refrigerator)

LEVEL 2 DRESSING ROOMS

Dressing Room 227

- Width 11' 0" – Length 19' 10"
- Seats 4 people
- Restroom provided (shower, sink and toilet)
- Leather couch
- Make-up counter
- Costume rack provided

Dressing Room 228

- Width 10' 11" – Length 24' 0"
- Seats 4 people
- Restroom provided (shower, sink and toilet)
- Make-up counter
- Leather couch
- Costume rack provided

Dressing Room 229

- Width 10' 10" – Length 18' 3"
- Seats 4 people
- Restroom provided (shower, sink and toilet)
- Make-up counter
- Costume rack provided

Dressing Room 231

- Width 10' 7" – Length 18' 3"

- Seats 4 people
- Restroom provided (shower, sink and toilet)
- Costume rack provided

Wardrobe Room 232

- Width 8' 4" – Length 13' 2"
- Seats 2 or 3 people
- Table and chair provided
- Wardrobe mirror

Dressing Room 233

- Width 8' 6" – Length 24' 0"
- Seats 3 people
- Restroom Provided (shower, sink and toilet)
- Make-up counter
- Costume rack provided
- Leather couch

Wardrobe

The wardrobe room (shop) is on the ground floor, near the stage. The shop is quite spacious, and has a separate laundry room with sorting space. It contains two commercial dryers (laundromat style) and one very large commercial front loader washer (comforter/ carpet size). There is room in front of the slop sink to add a second consumer washer, however we do not have one in stock. You can rent one locally. Water and electric hookups are present.

The theatre does not own steamers/irons/boards, laundry carts, etc.

N.B.: All dressing rooms are accessed by a SLOW elevator or stairs. Two or three rolling racks/ gondolas will fit in the elevator, but you should plan your time accordingly

The backstage freight elevator is a hospital gurney type, with an interior measuring approximately 6' x 8'. Capacity 10000 lbs speed very slow.

Laundry Facilities

- 1 large commercial washer
- 2 large commercial dryers
- Can accommodate 1 additional domestic washer in addition.
- Counter space, however no other equipment.

Makeup

The California has a large makeup room in the basement, just down the hall from the main dressing room area. It has room for approximately 8-10 stations, as well as hair sinks, color corrected lighting, continuous mirrors and ample counter space. There are electric outlets on the countertop at each station, as well as wall outlets

Amenities

All dressing rooms are heated/air conditioned, with full counters, full mirrors, color corrected lighting, electric outlets on the counters, lockable drawers (bring your own padlock), chairs, rolling rack space (no hanging capacity- racks only), bathrooms, showers and vinyl floors. All dressing rooms are ADA compliant

Pianos

House does not own a piano.

Odds & Ends

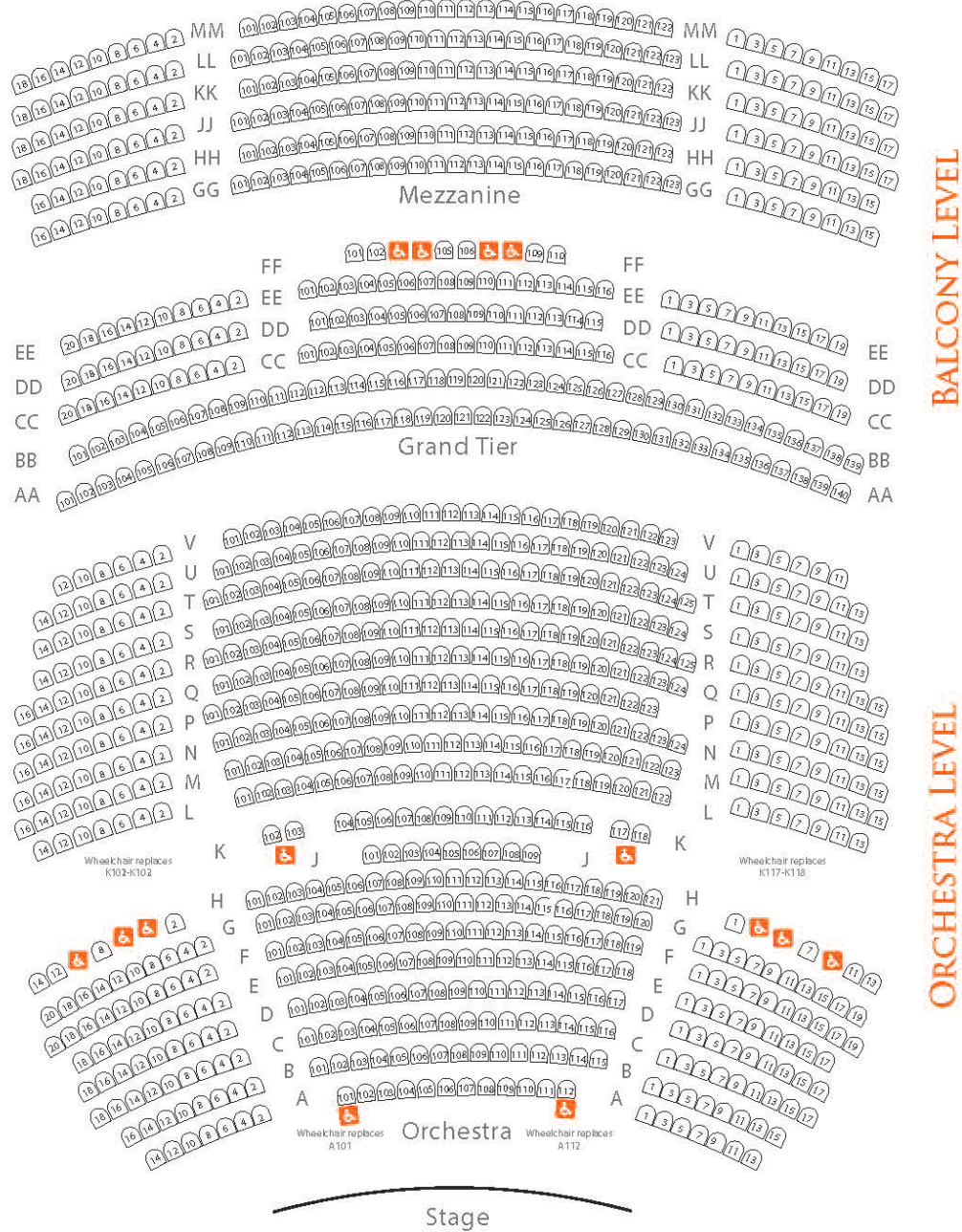
Storage and Rehearsal areas

Loading dock area is 26' x 60' concrete floor, off SR

Rehearsal Hall on 3rd floor- 37'-3" x 47'-8"

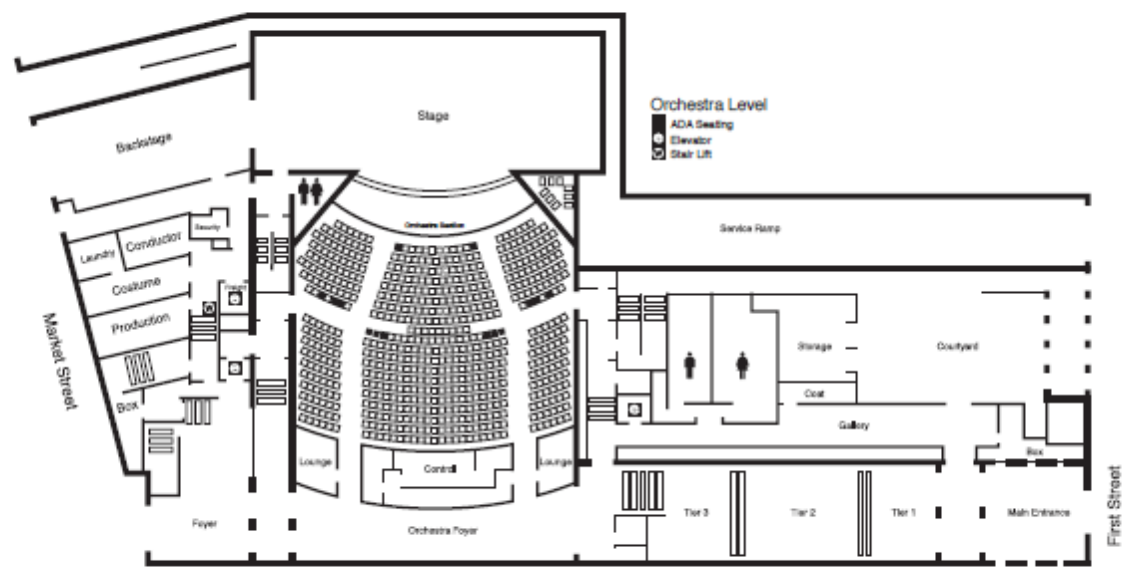
Hall is equipped with a sprung hardwood floor, lighting and sound equipment.

SEATING PLAN

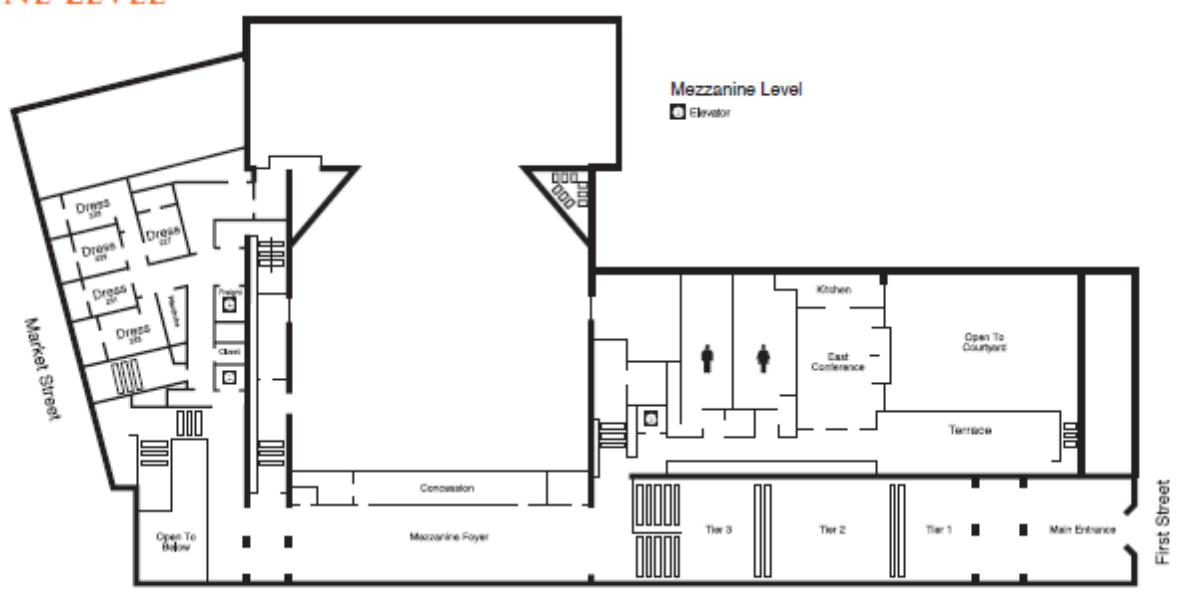


Location	Capacity	Orchestra Level Seating Capacity	Balcony Level Seating Capacity (Grand Tier & Mezzanine)	Grand Tier Level Seating Capacity	Mezzanine Level Seating Capacity	Stage Size (W x D)	Active Stage Area	Stage Proscenium Opening (W x H)
California Theatre	1,122 Total 1,108 Fixed 12-14 Wheelchair areas	687 Total, 679 Fixed 8 Wheelchair areas (Fixed seats K101-K102, K118-K119, A101& A112 can be removed to accommodate an additional wheelchair on each side)	435 Total 431 Fixed 4 Wheelchair areas	196 Total 192 Fixed 4 Wheelchair areas	239 Fixed	90' x 40'	60' x 40'	31' 6" x 44'

ORCHESTRA LEVEL

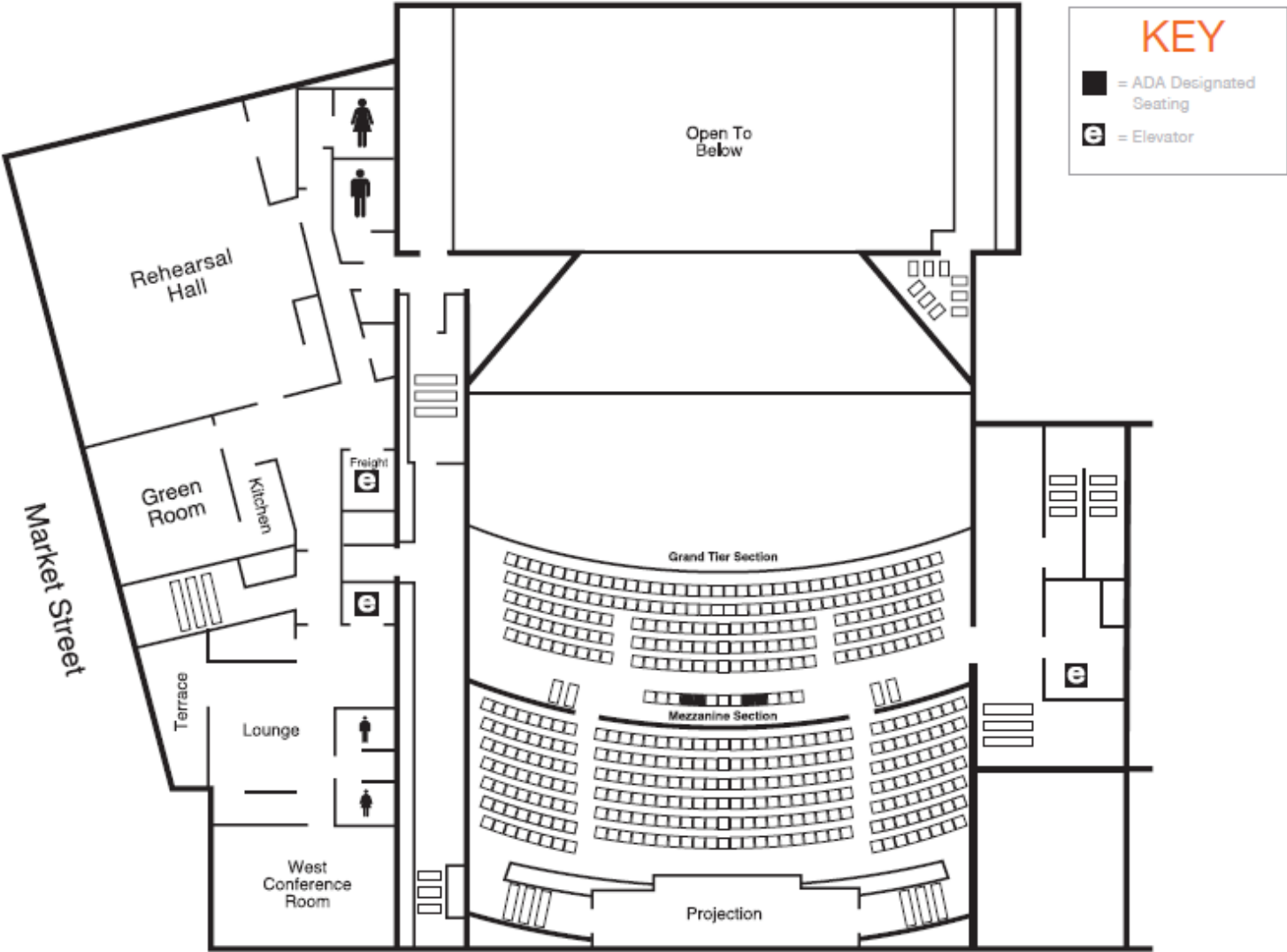


MEZZANINE LEVEL



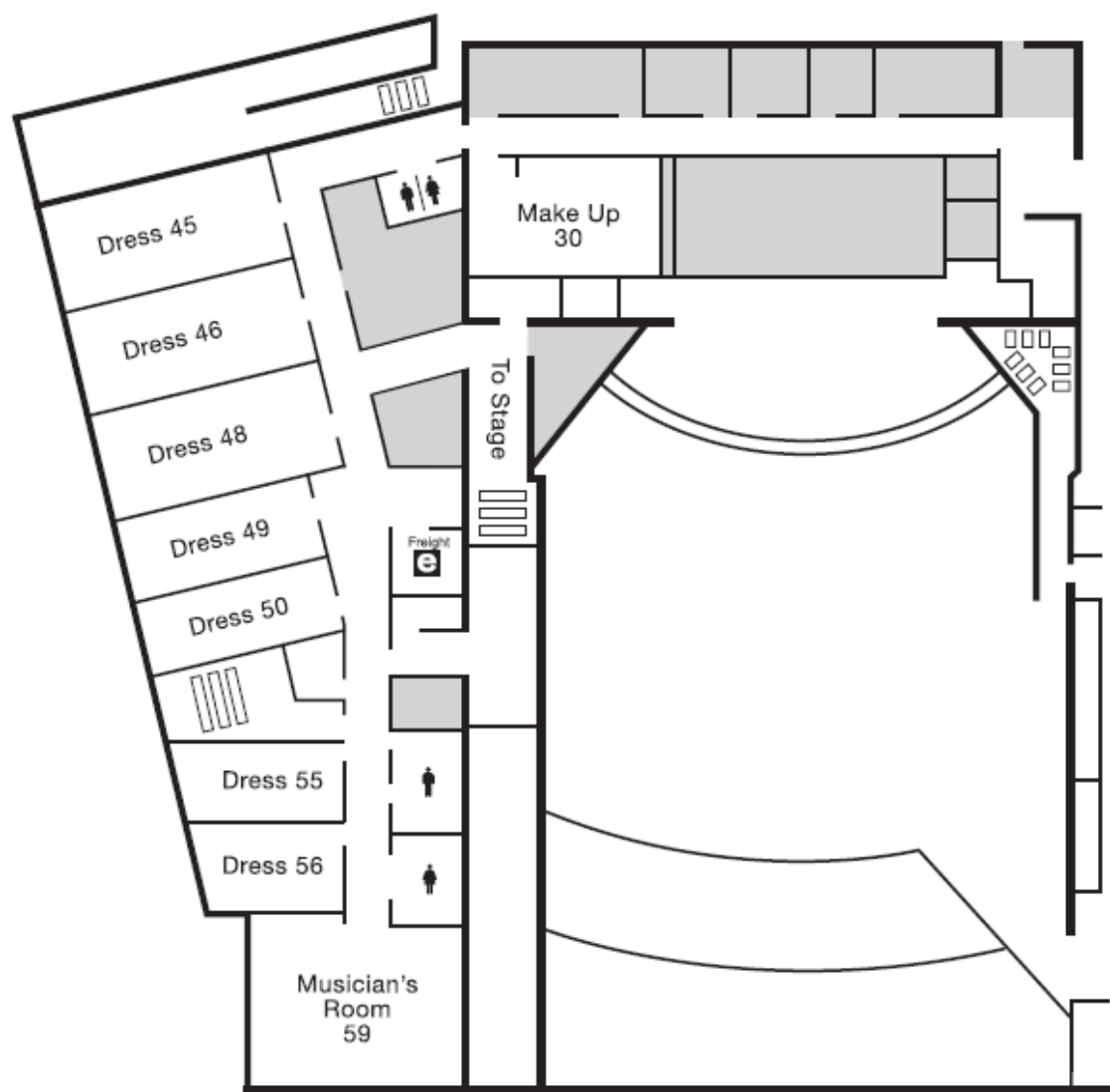
Location	Capacity	Orchestra Level Seating Capacity	Balcony Level Seating Capacity (Grand Tier & Mezzanine)	Grand Tier Level Seating Capacity	Mezzanine Level Seating Capacity	Stage Size (W x D)	Active Stage Area	Stage Proscenium Opening (W x H)
California Theatre	1,122 Total 1,108 Fixed 12-14 Wheelchair areas	687 Total, 679 Fixed 8 Wheelchair areas (Fixed seats K101- K102 & K118-K119 can be removed to accommodate an additional wheelchair on each side)	435 Total 431 Fixed 4 Wheelchair areas	196 Total 192 Fixed 4 Wheelchair areas	239 Fixed	90' x 40'	60' x 40'	31' 6" x 44'

BALCONY LEVEL



Location	Capacity	Orchestra Level Seating Capacity	Balcony Level Seating Capacity (Grand Tier & Mezzanine)	Grand Tier Level Seating Capacity	Mezzanine Level Seating Capacity	Stage Size (W x D)	Active Stage Area	Stage Proscenium Opening (W x H)
California Theatre	1,122 Total 1,108 Fixed 12-14 Wheelchair areas	687 Total, 679 Fixed 8 Wheelchair areas (Fixed seats K101-K102 & K118-K119 can be removed to accommodate an additional wheelchair on each side)	435 Total 431 Fixed 4 Wheelchair areas	196 Total 192 Fixed 4 Wheelchair areas	239 Fixed	90' x 40'	60' x 40'	31' 6" x 44'

LOWER LEVEL DRESSING ROOMS



Non-client facing operations

Location	Capacity	Orchestra Level Seating Capacity	Balcony Level Seating Capacity (Grand Tier & Mezzanine)	Grand Tier Level Seating Capacity	Mezzanine Level Seating Capacity	Stage Size (W x D)	Active Stage Area	Stage Proscenium Opening (W x H)
California Theatre	1,122 Total 1,108 Fixed 12-14 Wheelchair areas	687 Total, 679 Fixed 8 Wheelchair areas (Fixed seats K101- K102 & K118-K119 can be removed to accommodate an additional wheelchair on each side)	435 Total 431 Fixed 4 Wheelchair areas	196 Total 192 Fixed 4 Wheelchair areas	239 Fixed	90' x 40'	60' x 40'	31' 6" x 44'

EXPLORE DOWNTOWN

#DTSJ



sjdowntown.com